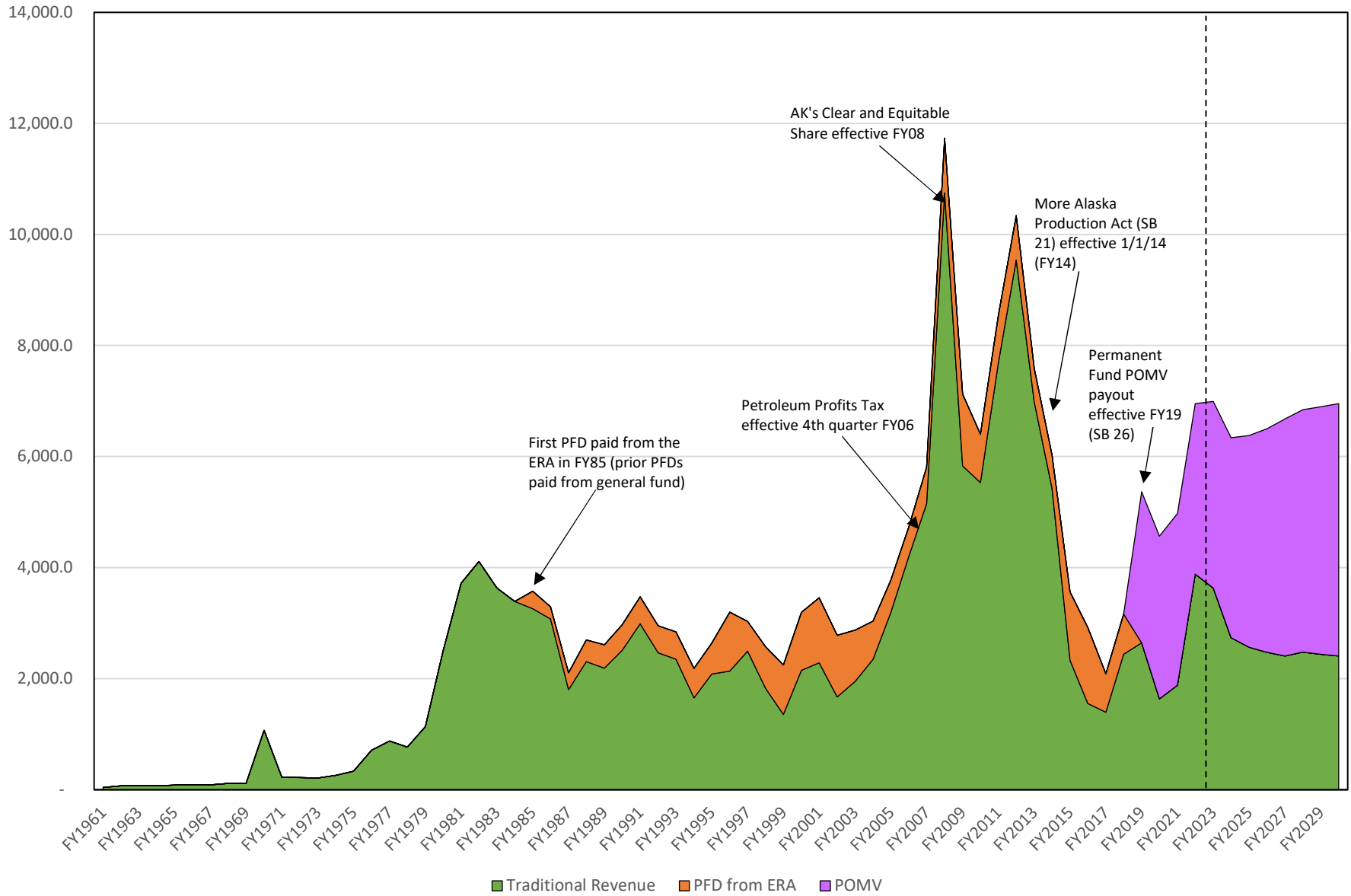
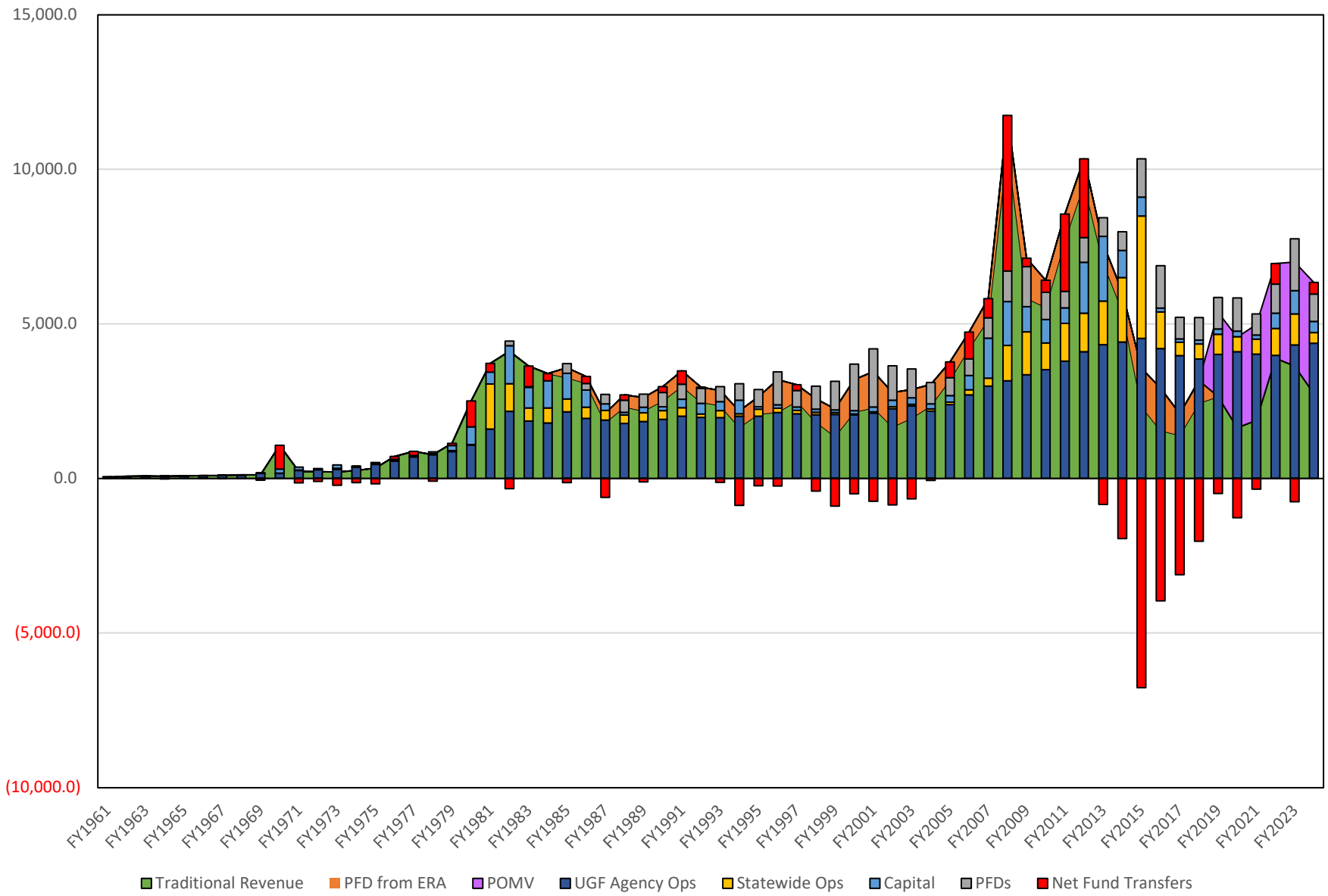


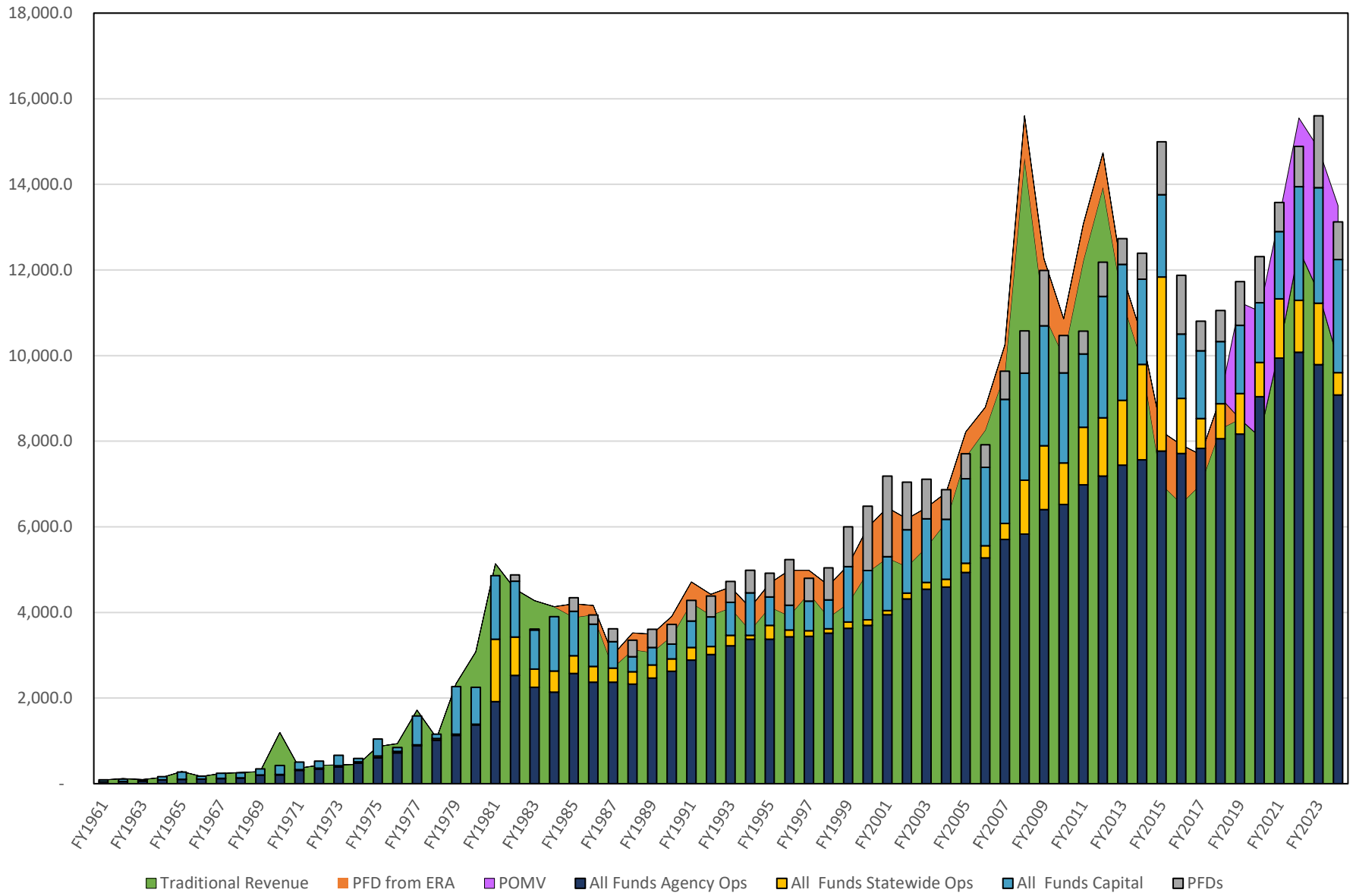
Unrestricted General Fund Revenue, FY1961 - FY2029 (DOR Spring 2023 Forecast)
(\$millions)



Nominal Unrestricted General Fund Revenue and Budget, FY1961 - FY2024
(\$millions)

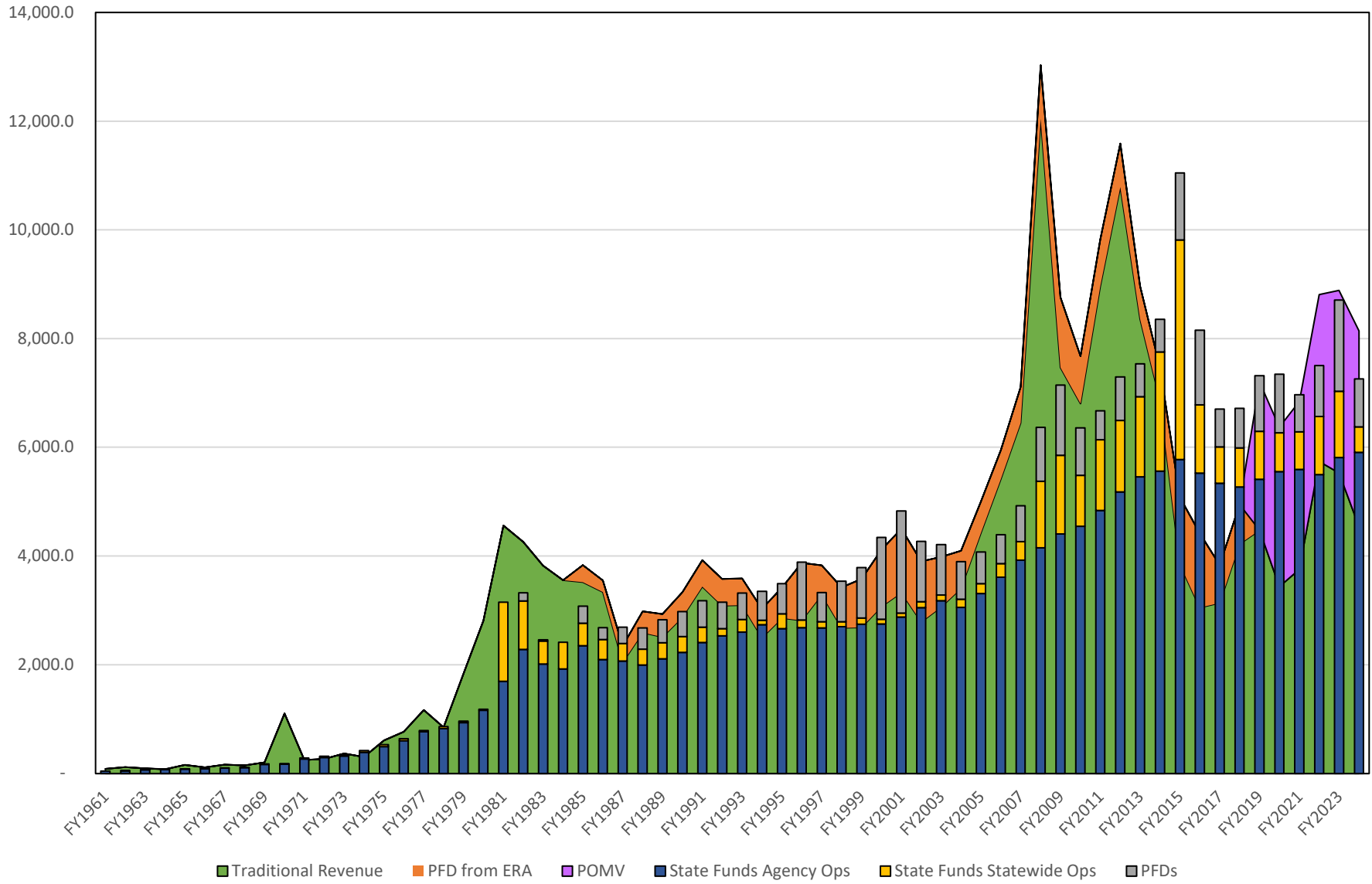


Nominal All Funds Revenue and Budget, FY1961 - FY2024
(\$millions)



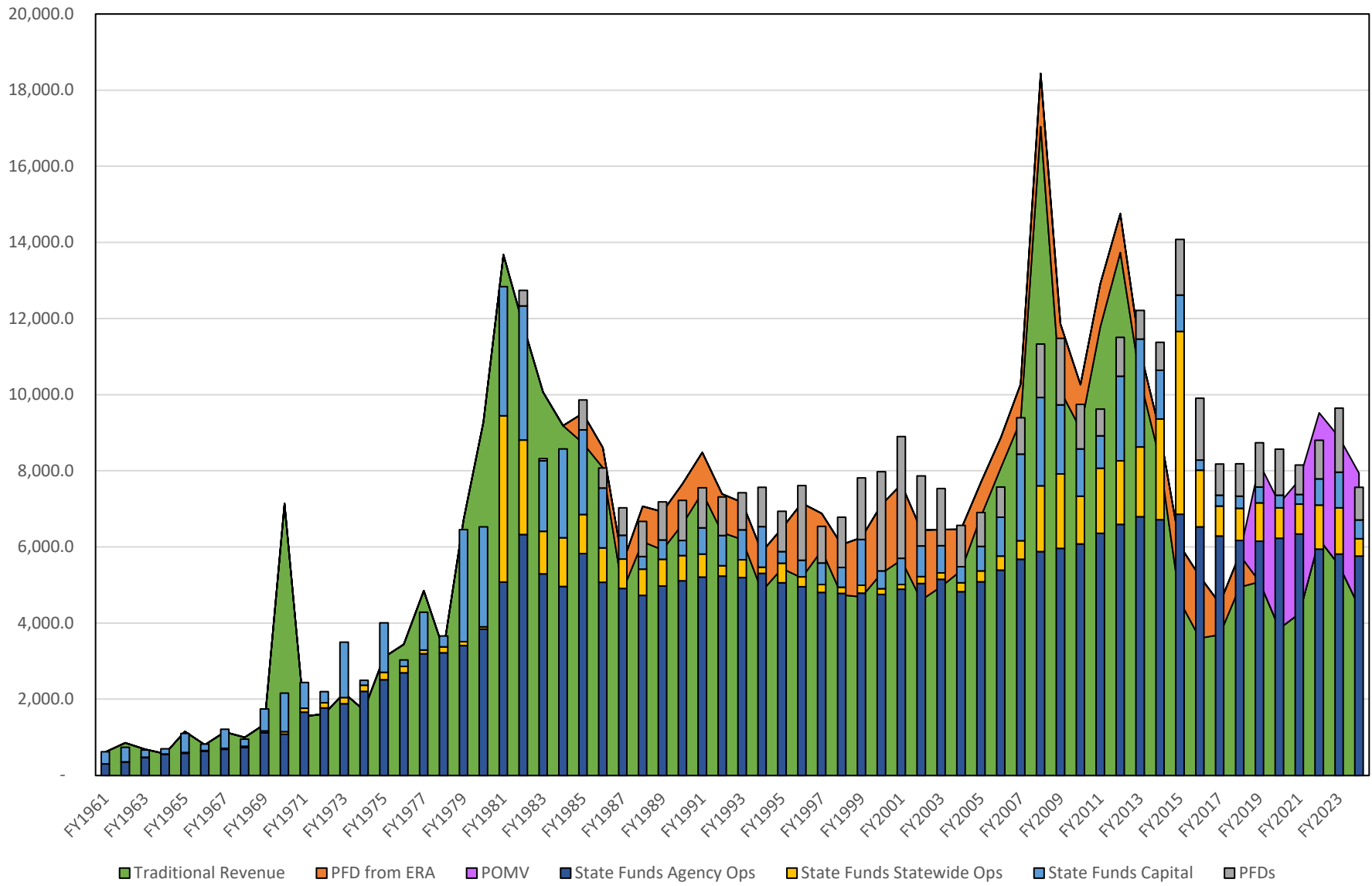
Nominal State Funds Revenue and Budget, FY1961 - FY2024

UGF, DGF, and Other Funds Only
(\$millions)



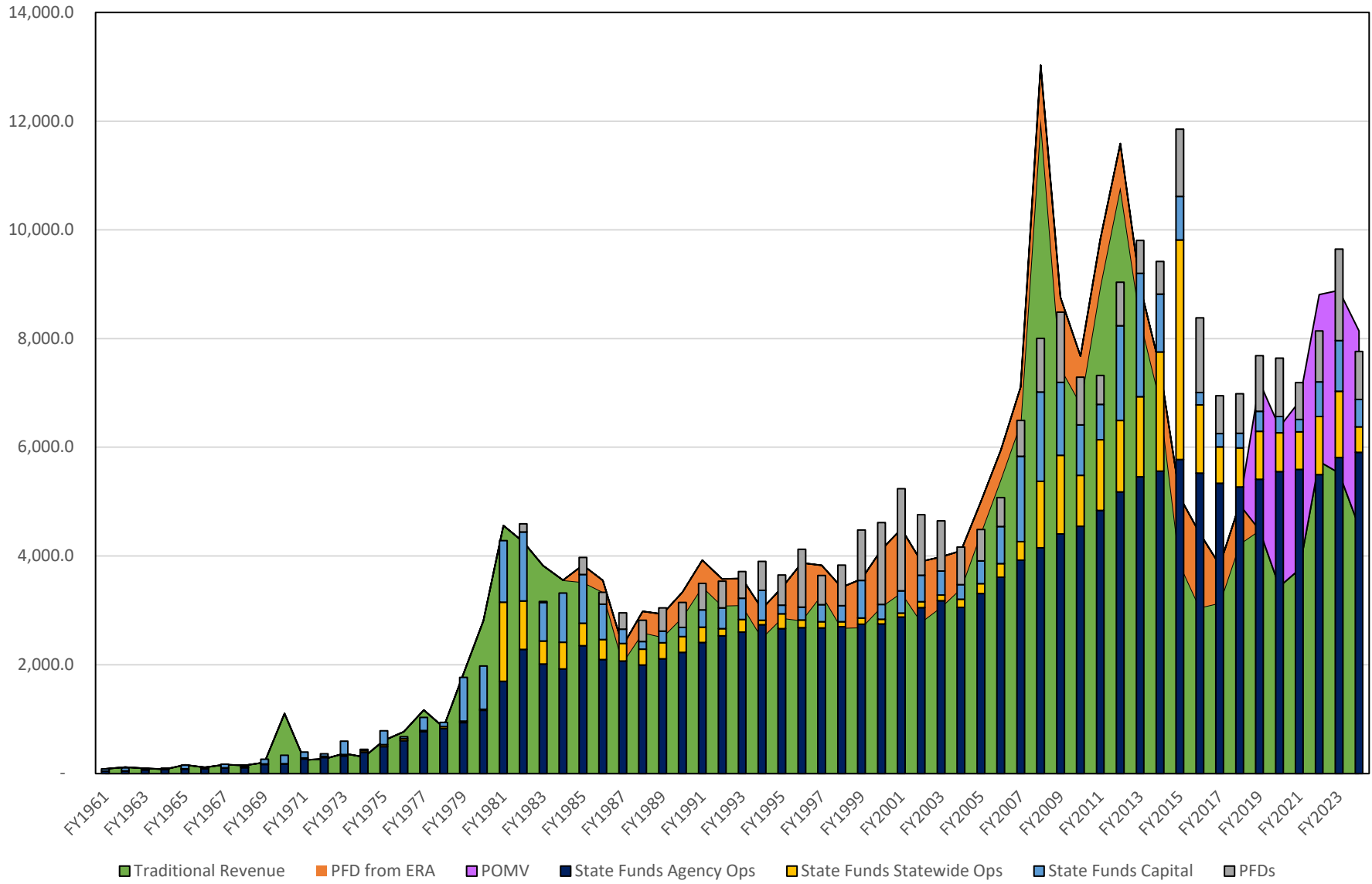
Real State Funds Revenue and Budget, FY1961 - FY2024

UGF, DGF, and Other Funds Only
(millions, in CY2022 dollars)

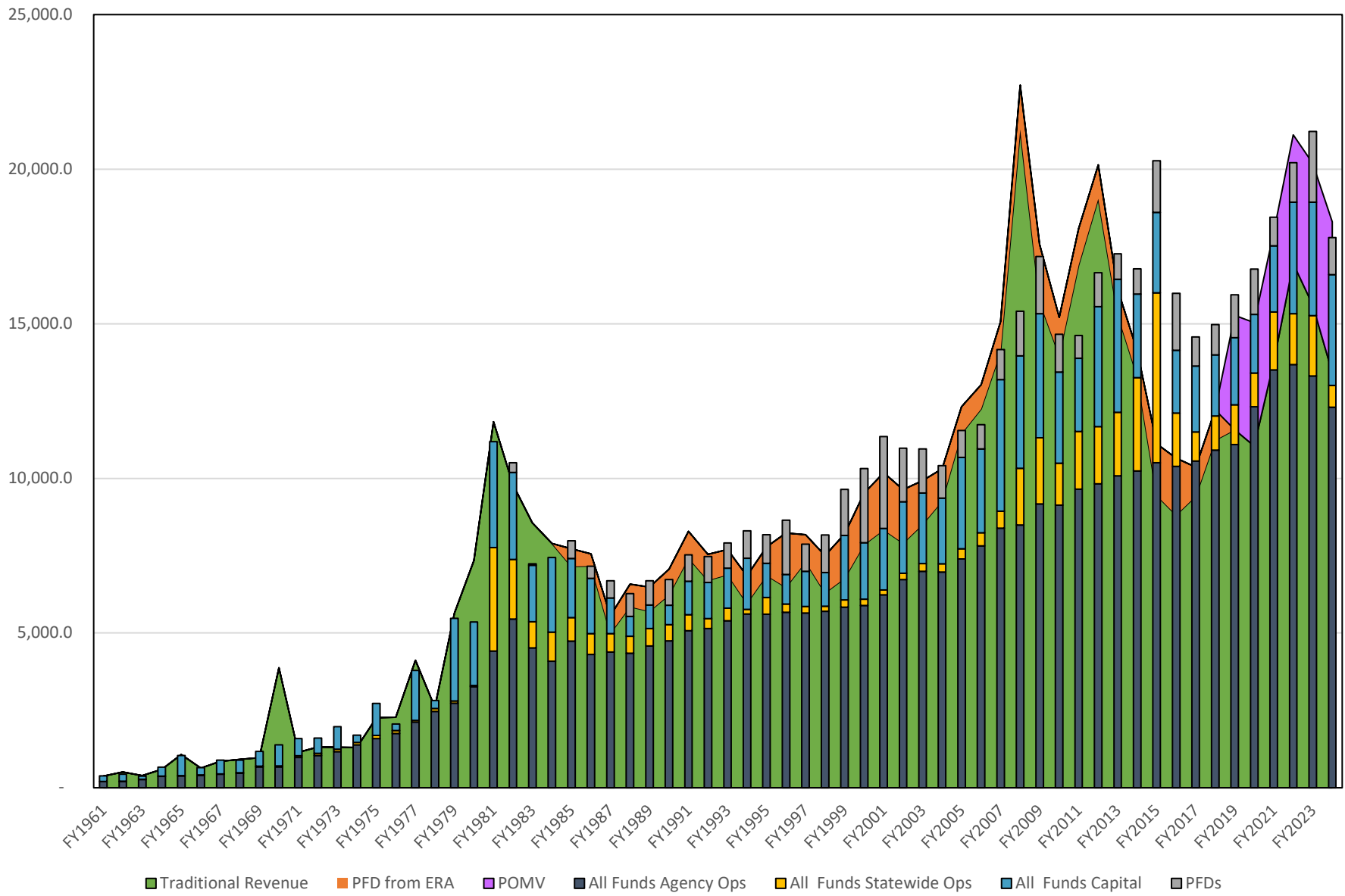


Nominal Per Capita State Funds Revenue and Budget, FY1961 - FY2024

UGF, DGF, and Other Funds Only
(\$millions)

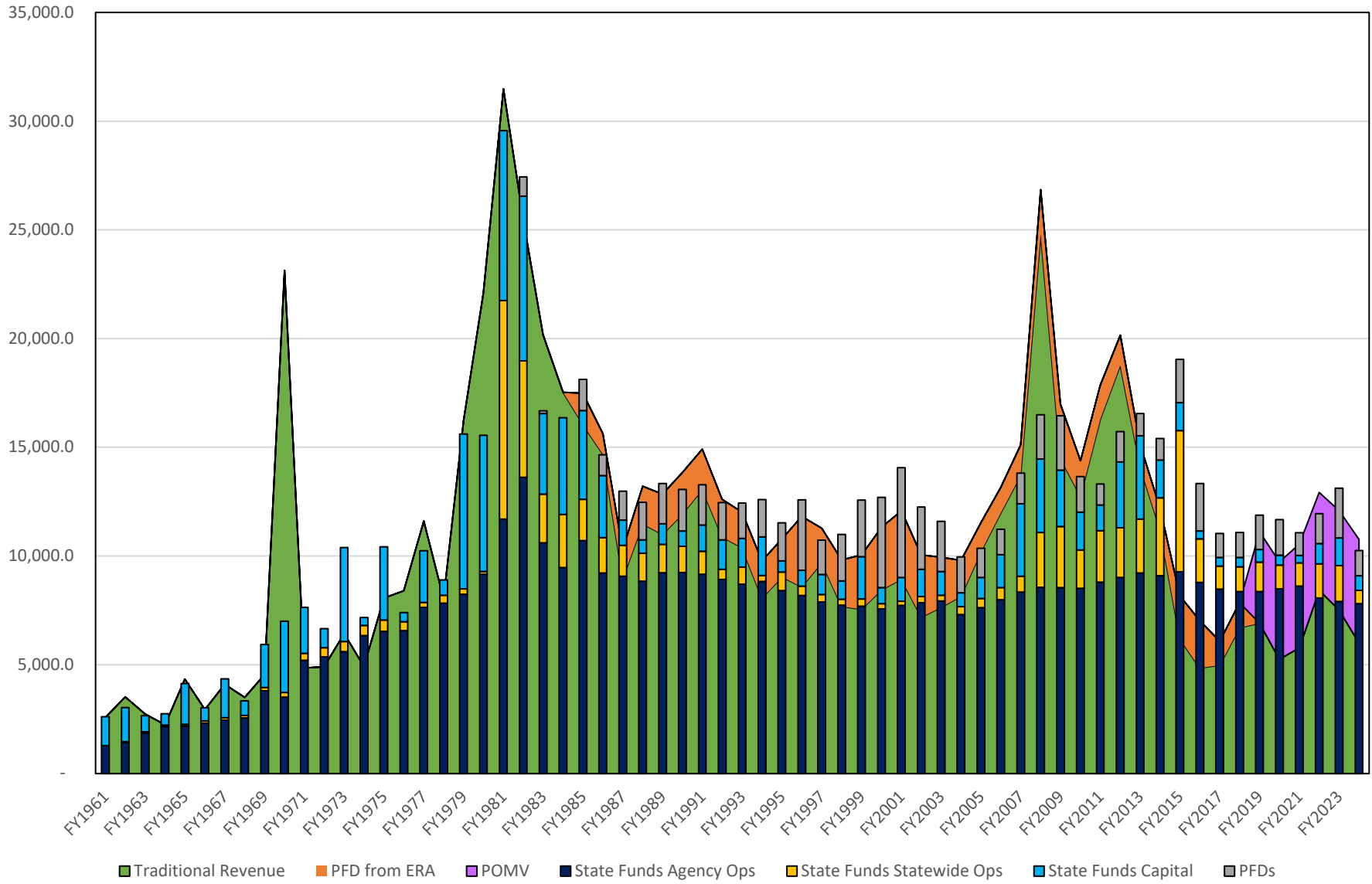


Nominal Per Capita All Funds Revenue and Budget, FY1961 - FY2024
(\$millions)

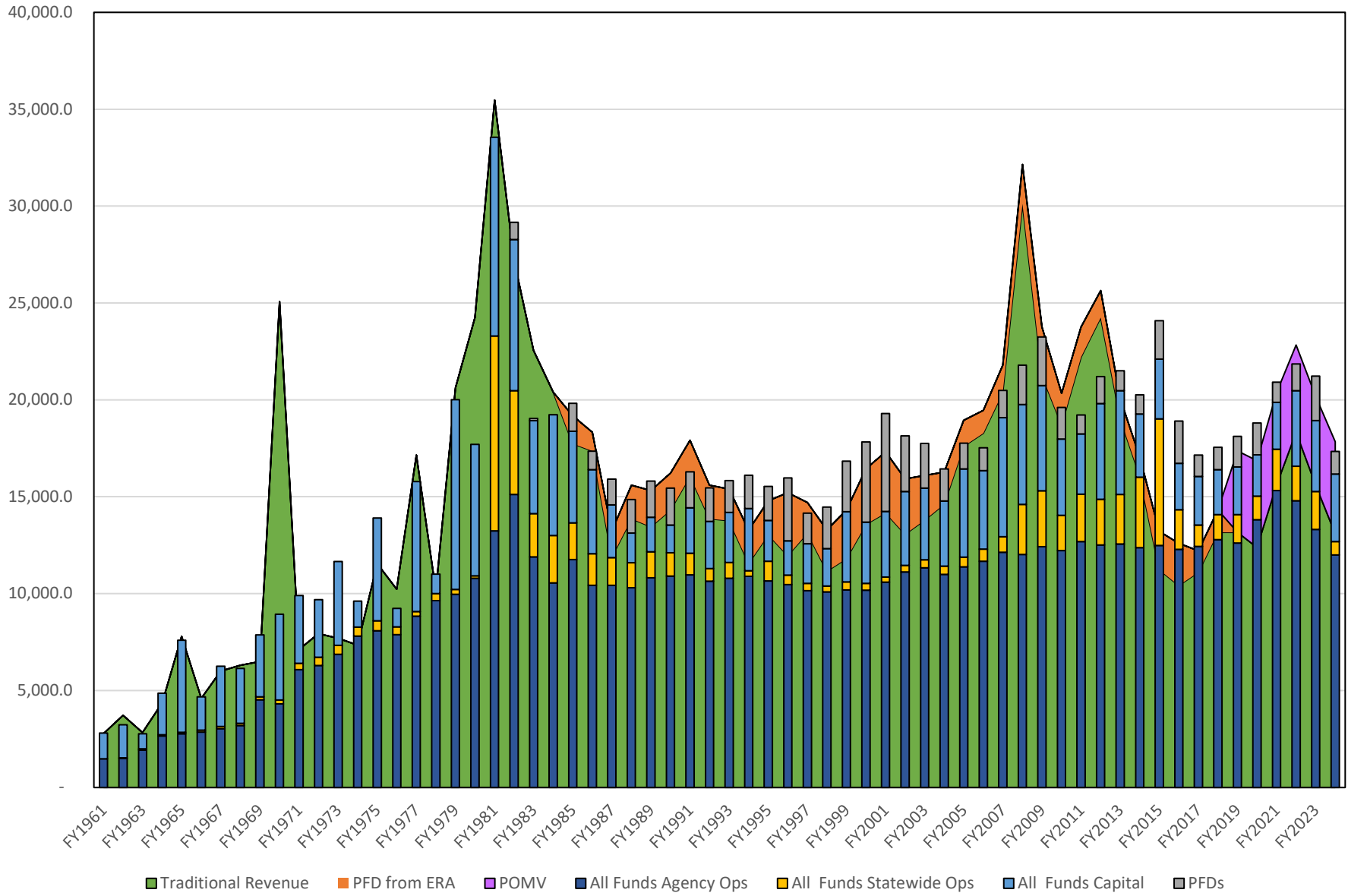


Real Per Capita State Funds Revenue and Budget, FY1961 - FY2024

UGF, DGF, and Other Funds Only
(millions, in CY2022 dollars)

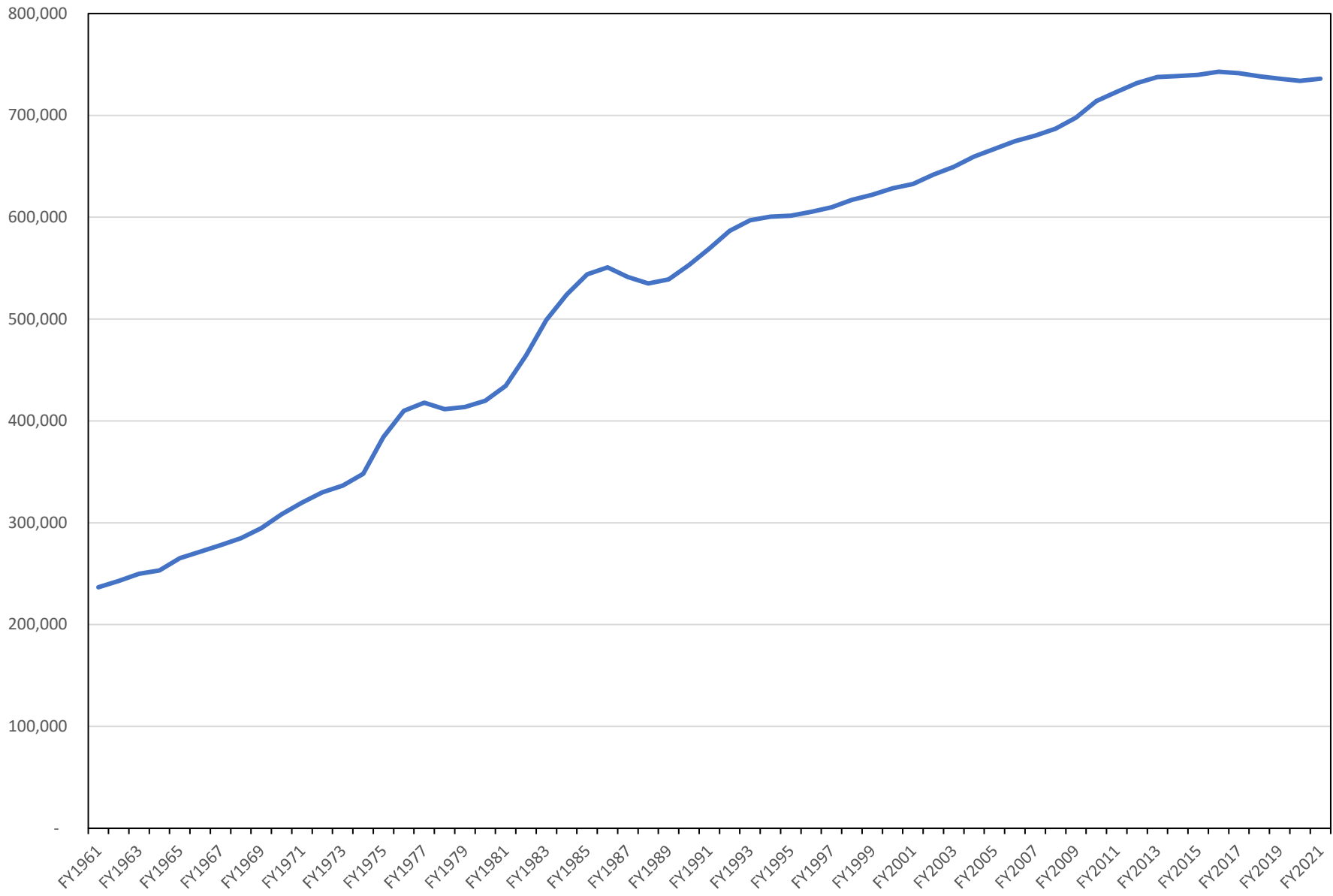


Real Per Capita All Funds Revenue, FY1961 - FY2024
 (millions, in CY2022 dollars)



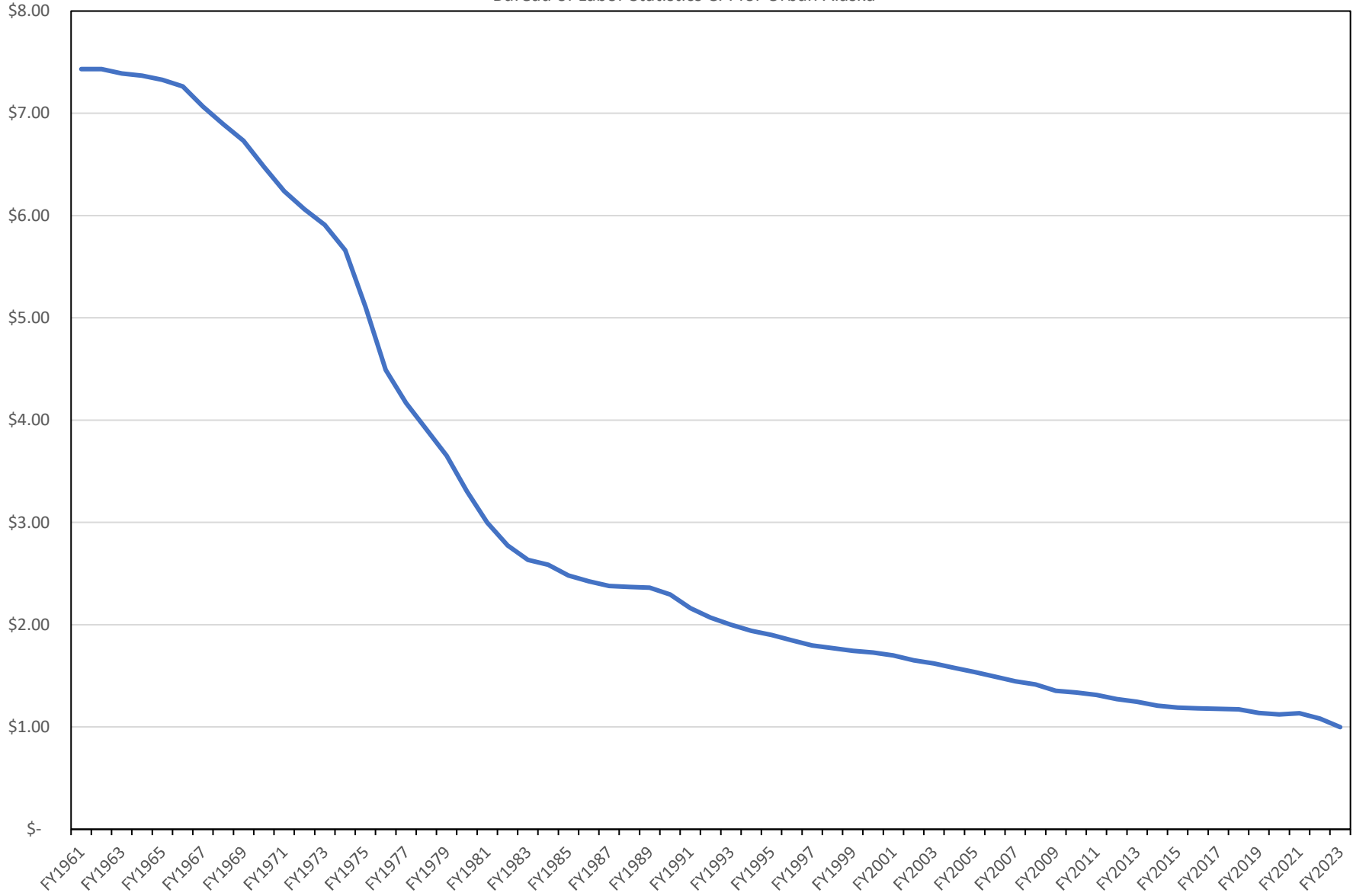
Alaska Population

<https://live.laborstats.alaska.gov/pop/>

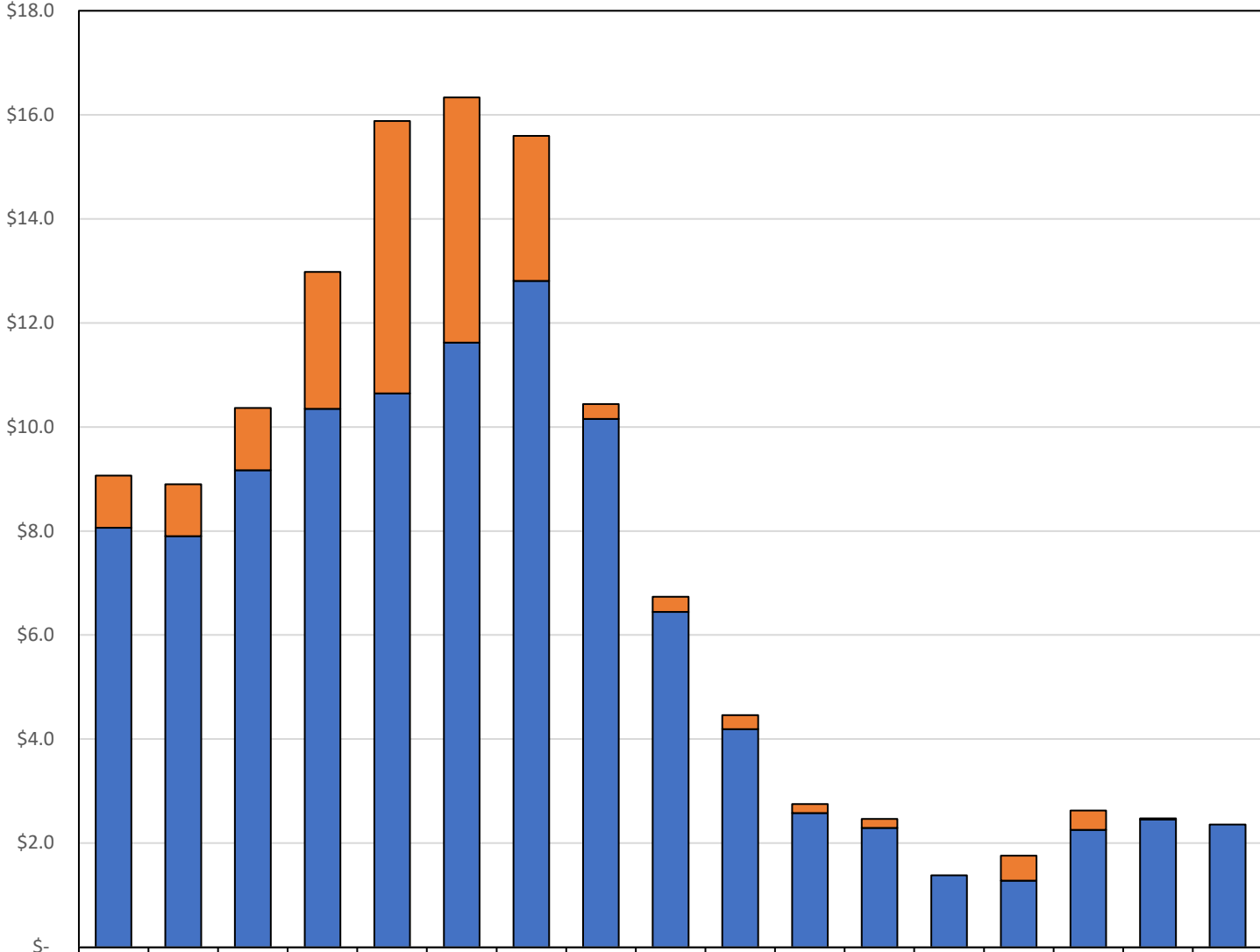


Alaska Inflation 1961 - 2023

Value of One Historical Dollar in CY 2022 Dollars
Bureau of Labor Statistics CPI for Urban Alaska

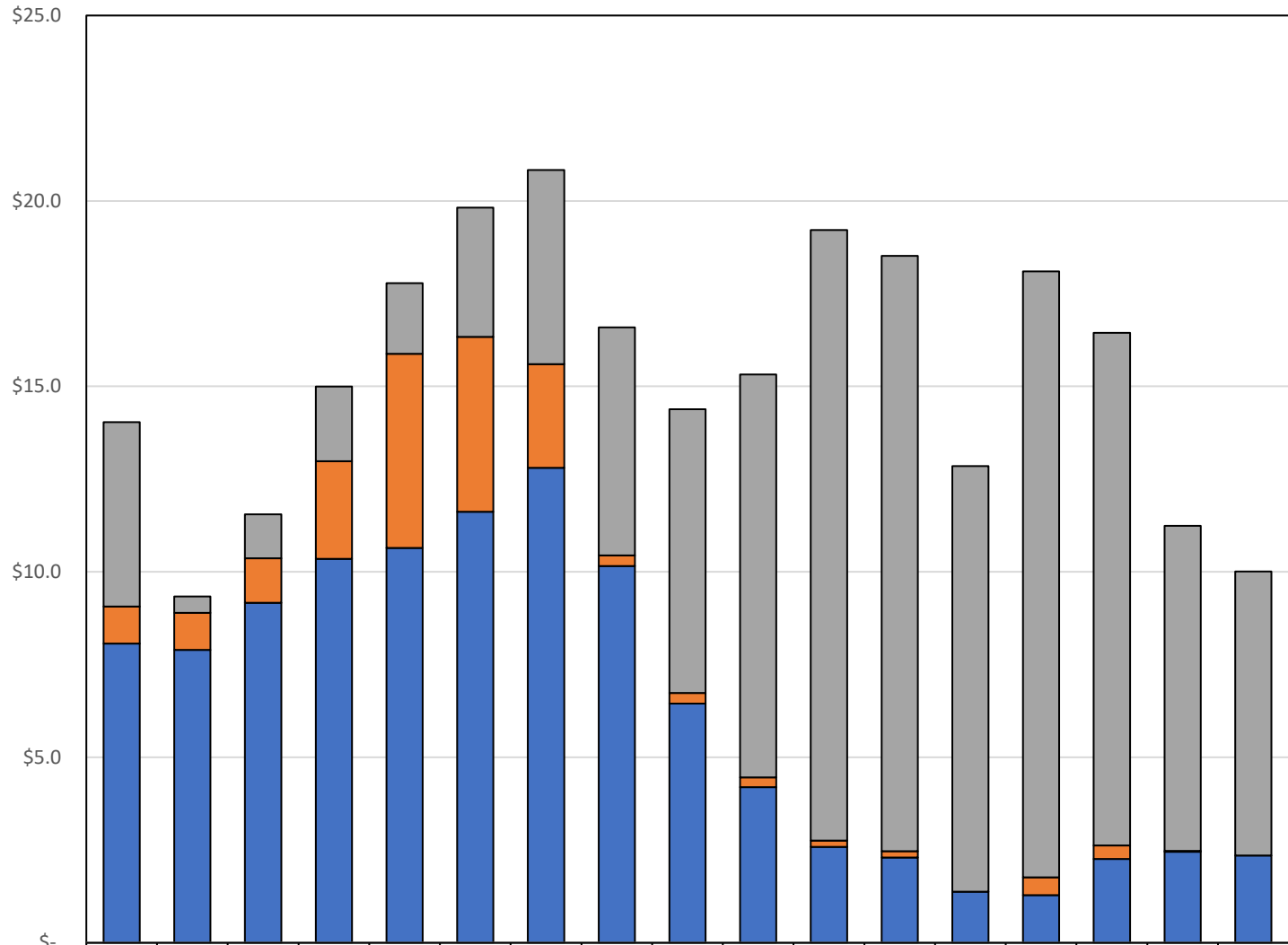


End-of-Year Reserves Balances (SBR & CBR) (\$billions)



Statutory Budget Reserve Fund (SBR)	\$1.0	\$1.0	\$1.2	\$2.6	\$5.2	\$4.7	\$2.8	\$0.3	\$0.3	\$0.3	\$0.2	\$0.2	\$0.0	\$0.5	\$0.4	\$0.0	\$0.0
Constitutional Budget Reserve Fund (CBR)	\$8.1	\$7.9	\$9.2	\$10.3	\$10.6	\$11.6	\$12.8	\$10.2	\$6.4	\$4.2	\$2.6	\$2.3	\$1.4	\$1.3	\$2.3	\$2.5	\$2.4

End-of-Year Reserves Balances (\$billions)



■ Earnings Reserve Account Realized Balance	\$5.0	\$0.4	\$1.2	\$2.0	\$1.9	\$3.5	\$5.2	\$6.1	\$7.6	\$10.9	\$16.5	\$16.1	\$11.5	\$16.3	\$13.8	\$8.8	\$7.7
■ Statutory Budget Reserve Fund (SBR)	\$1.0	\$1.0	\$1.2	\$2.6	\$5.2	\$4.7	\$2.8	\$0.3	\$0.3	\$0.3	\$0.2	\$0.2	\$0.0	\$0.5	\$0.4	\$0.0	\$0.0
■ Constitutional Budget Reserve Fund (CBR)	\$8.1	\$7.9	\$9.2	\$10.3	\$10.6	\$11.6	\$12.8	\$10.2	\$6.4	\$4.2	\$2.6	\$2.3	\$1.4	\$1.3	\$2.3	\$2.5	\$2.4