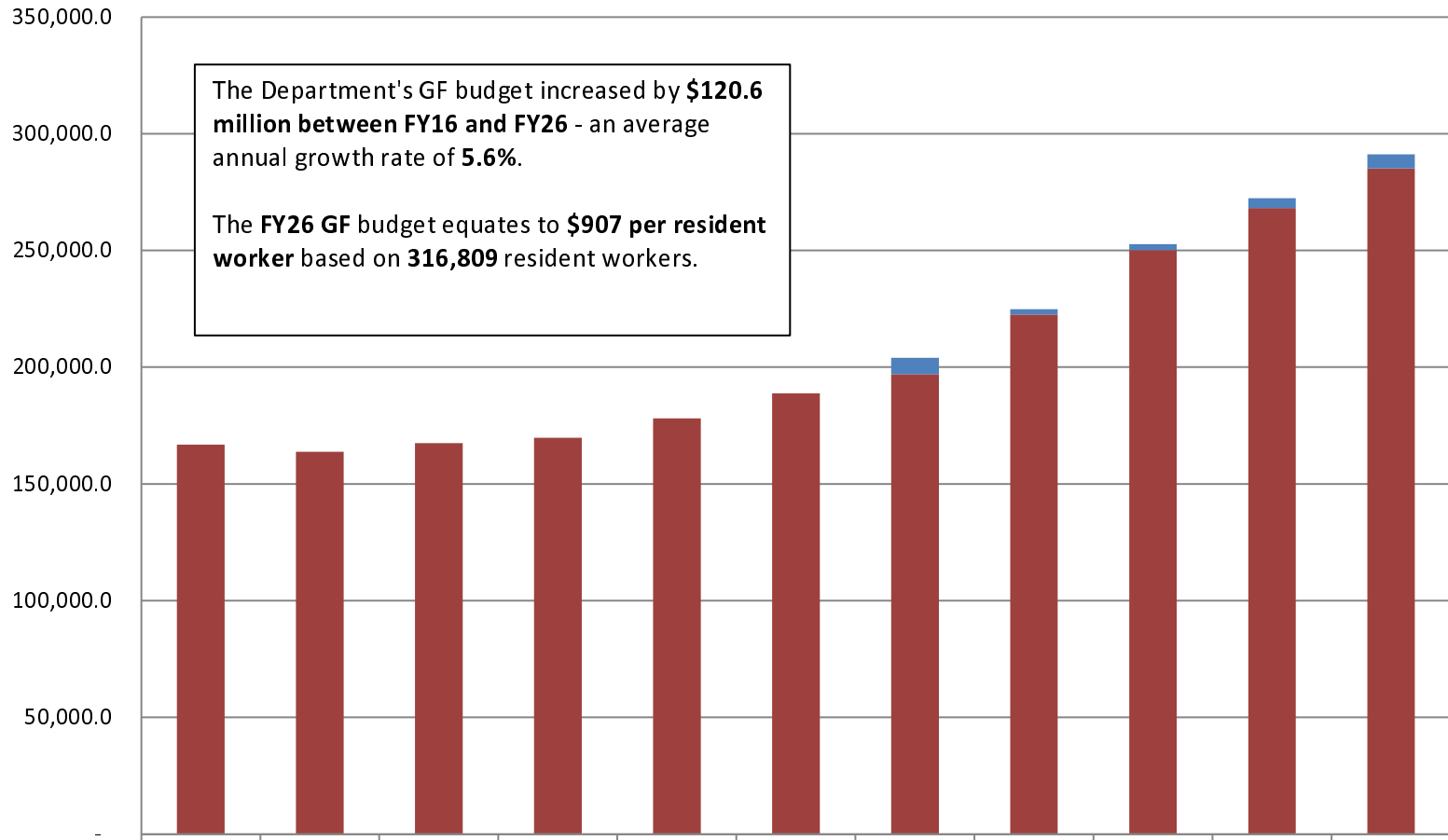
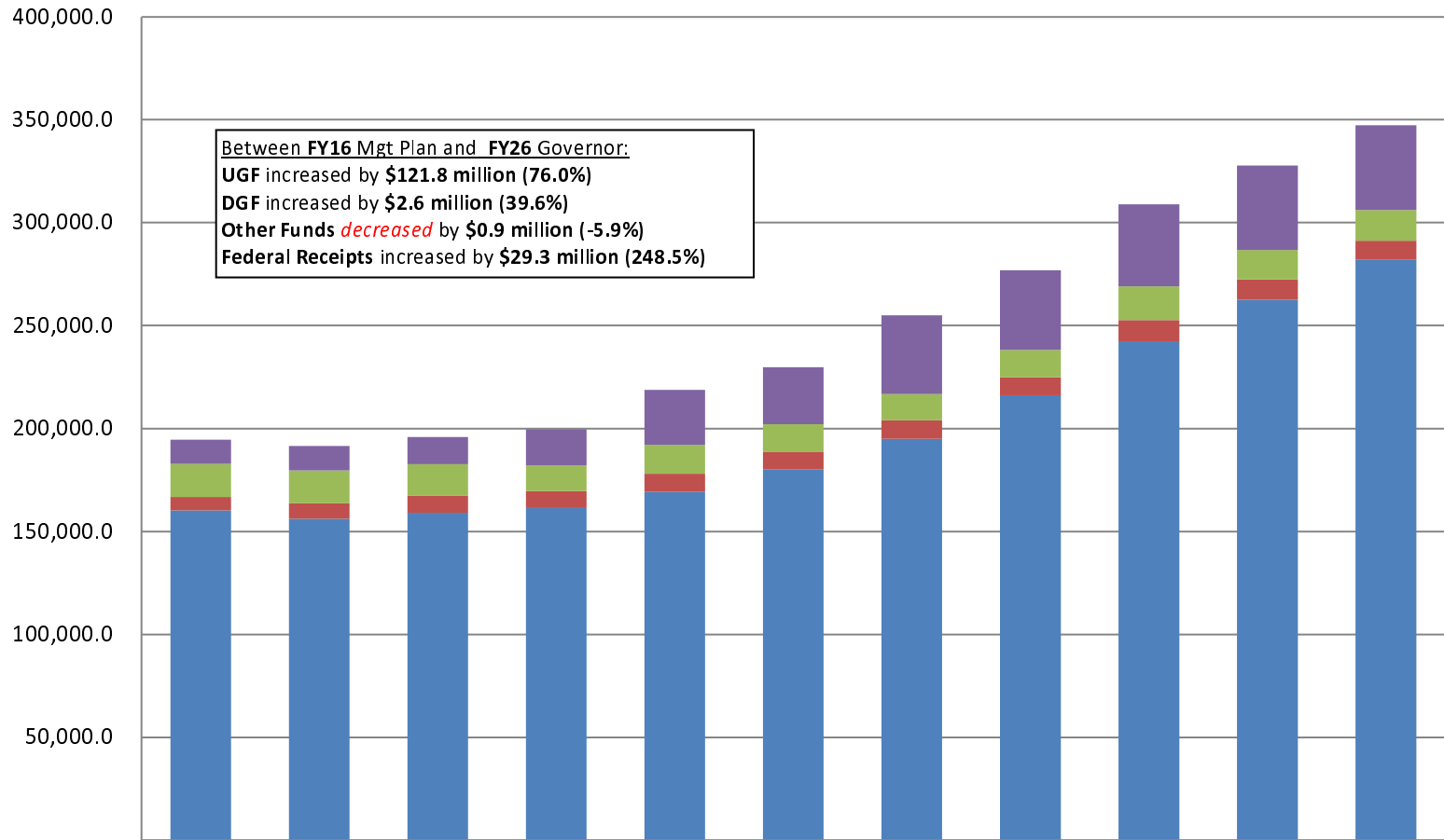


## Department of Public Safety Total General Fund Budget (GF Only) (\$ Thousands)



	16MgtPln	17MgtPln	18MgtPln	19MgtPln	20MgtPln	21MgtPln	22MgtPln	23MgtPln	24MgtPln	25MgtPln	26Gov
% of All Agencies' Budgets	3.5%	3.5%	3.7%	3.6%	3.9%	3.9%	4.4%	4.5%	4.9%	4.9%	5.5%
■ Average of SB55	-	-	-	-	-	-	7,027.7	2,285.1	2,576.7	4,249.3	6,071.0
■ Total Agency Budget (GF Only)	166,820.1	163,705.3	167,443.3	169,707.1	178,066.2	188,766.6	197,002.4	222,521.7	250,116.8	268,138.1	285,126.7

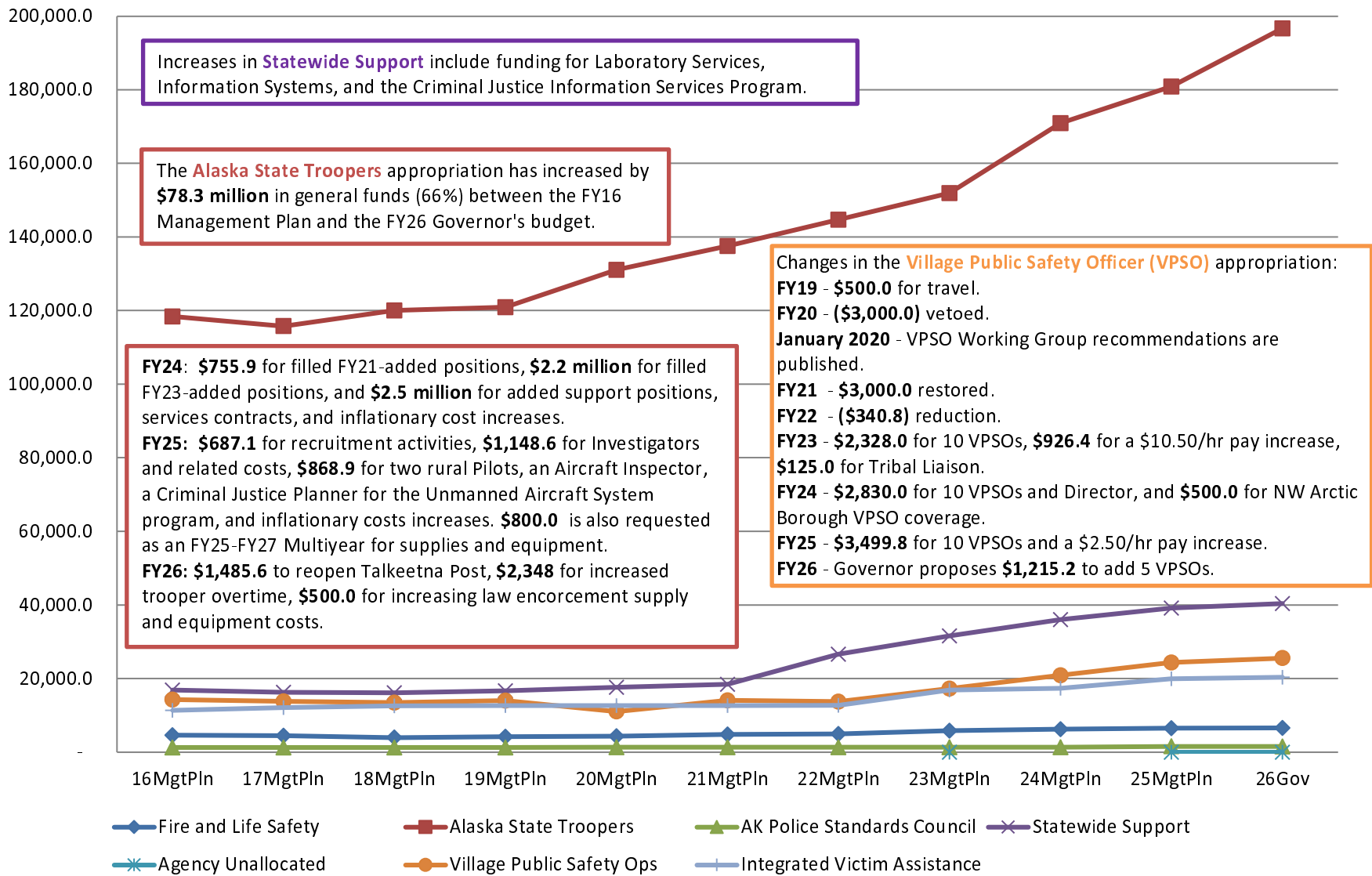
## Department of Public Safety Total Funding Comparison by Fund Group (\$ Thousands)



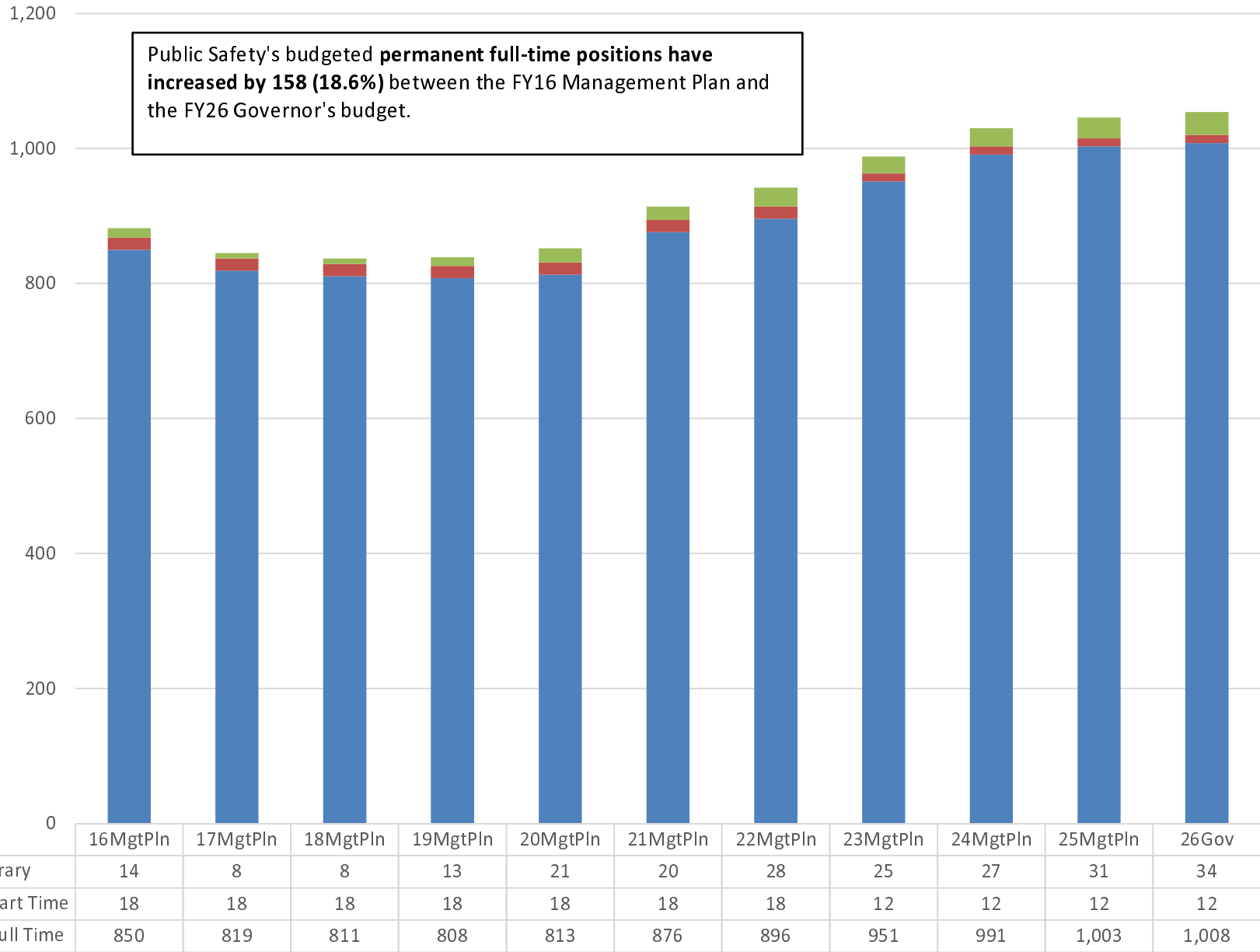
	16MgtPln	17MgtPln	18MgtPln	19MgtPln	20MgtPln	21MgtPln	22MgtPln	23MgtPln	24MgtPln	25MgtPln	26Gov
■ Federal Receipts (Fed)	11,799.7	11,806.8	13,165.8	17,487.7	26,659.6	27,672.5	38,237.6	38,774.7	39,775.1	40,974.1	41,124.3
■ Other State Funds (Other)	15,957.4	15,951.9	15,225.2	12,436.3	13,987.2	13,368.7	12,749.1	13,308.6	16,405.6	14,330.6	15,011.1
■ Designated General (DGF)	6,599.9	7,564.3	8,347.6	8,301.0	8,843.2	8,737.3	8,983.5	8,711.1	10,309.4	9,883.5	9,214.8
■ Unrestricted General (UGF)	160,220.2	156,141.0	159,095.7	161,406.1	169,223.0	180,029.3	195,046.6	216,095.7	242,384.1	262,503.9	281,982.9

# Appropriations within the Department of Public Safety

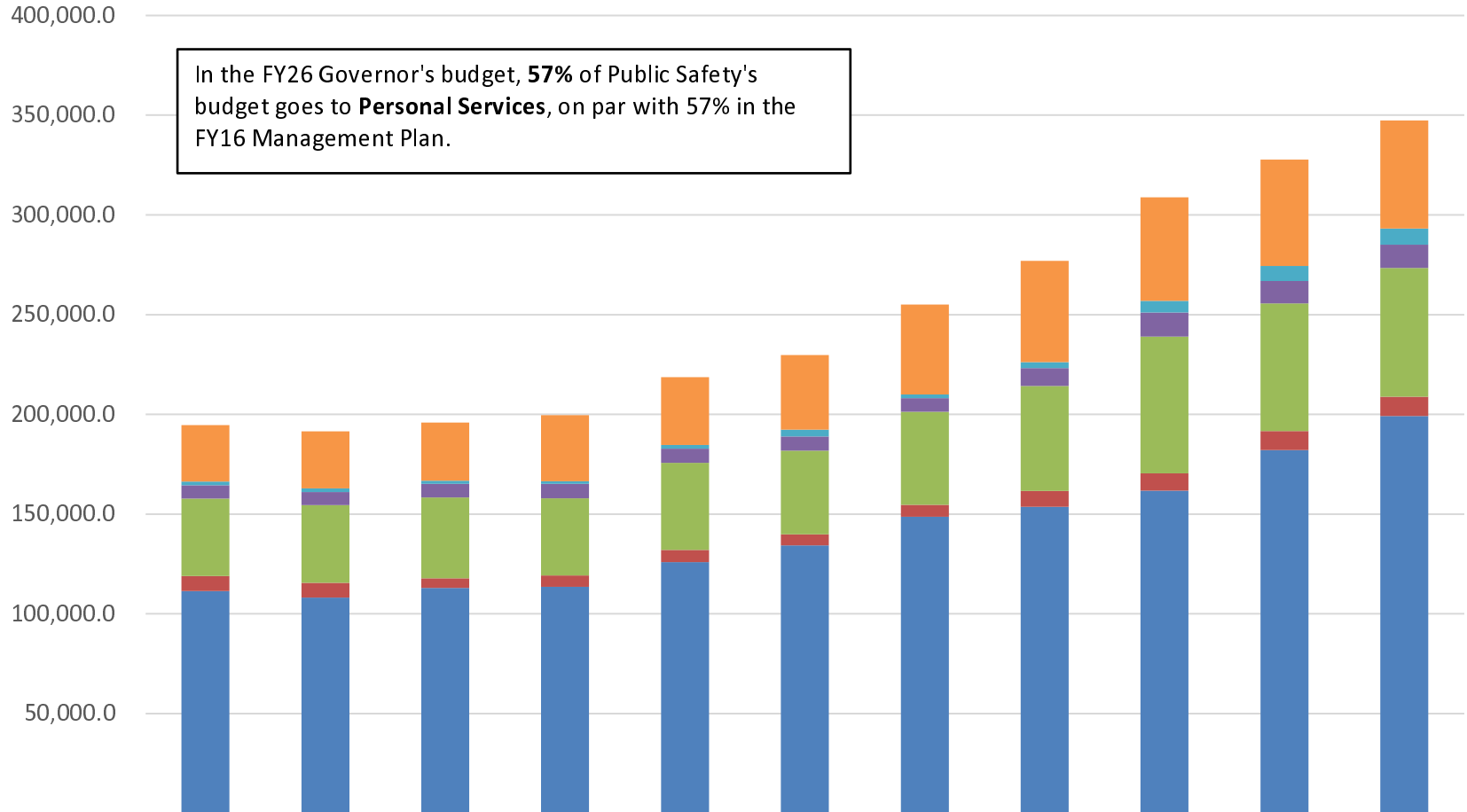
(GF Only)  
(\$ Thousands)



## Budgeted Positions in the Department of Public Safety



## Department of Public Safety Budget by Line Item



In the FY26 Governor's budget, **57%** of Public Safety's budget goes to **Personal Services**, on par with 57% in the FY16 Management Plan.

	16MgtPln	17MgtPln	18MgtPln	19MgtPln	20MgtPln	21MgtPln	22MgtPln	23MgtPln	24MgtPln	25MgtPln	26Gov
7 Grants, Benefits	28,231.7	28,591.0	29,101.0	33,114.1	34,114.3	37,516.2	45,012.7	50,639.4	51,911.3	53,336.7	54,190.3
5 Capital Outlay	1,805.5	1,755.5	1,502.5	1,346.7	1,815.1	3,295.6	1,847.0	3,057.5	5,922.4	7,424.4	8,147.0
4 Commodities	6,731.5	6,615.2	6,876.8	7,185.9	7,038.6	7,150.9	6,794.4	8,935.3	12,054.7	11,255.7	11,650.5
3 Services	38,820.1	38,955.2	40,463.8	38,787.5	43,638.5	41,992.9	46,688.0	52,564.2	68,498.4	64,065.4	64,436.2
2 Travel	7,578.2	7,325.4	4,839.2	5,678.9	6,226.9	5,546.9	6,053.6	8,061.6	8,756.5	9,561.1	9,737.1
1 Personal Services	111,410.	108,221.	113,051.	113,518.	125,879.	134,305.	148,621.	153,632.	161,731.	182,048.	199,172.