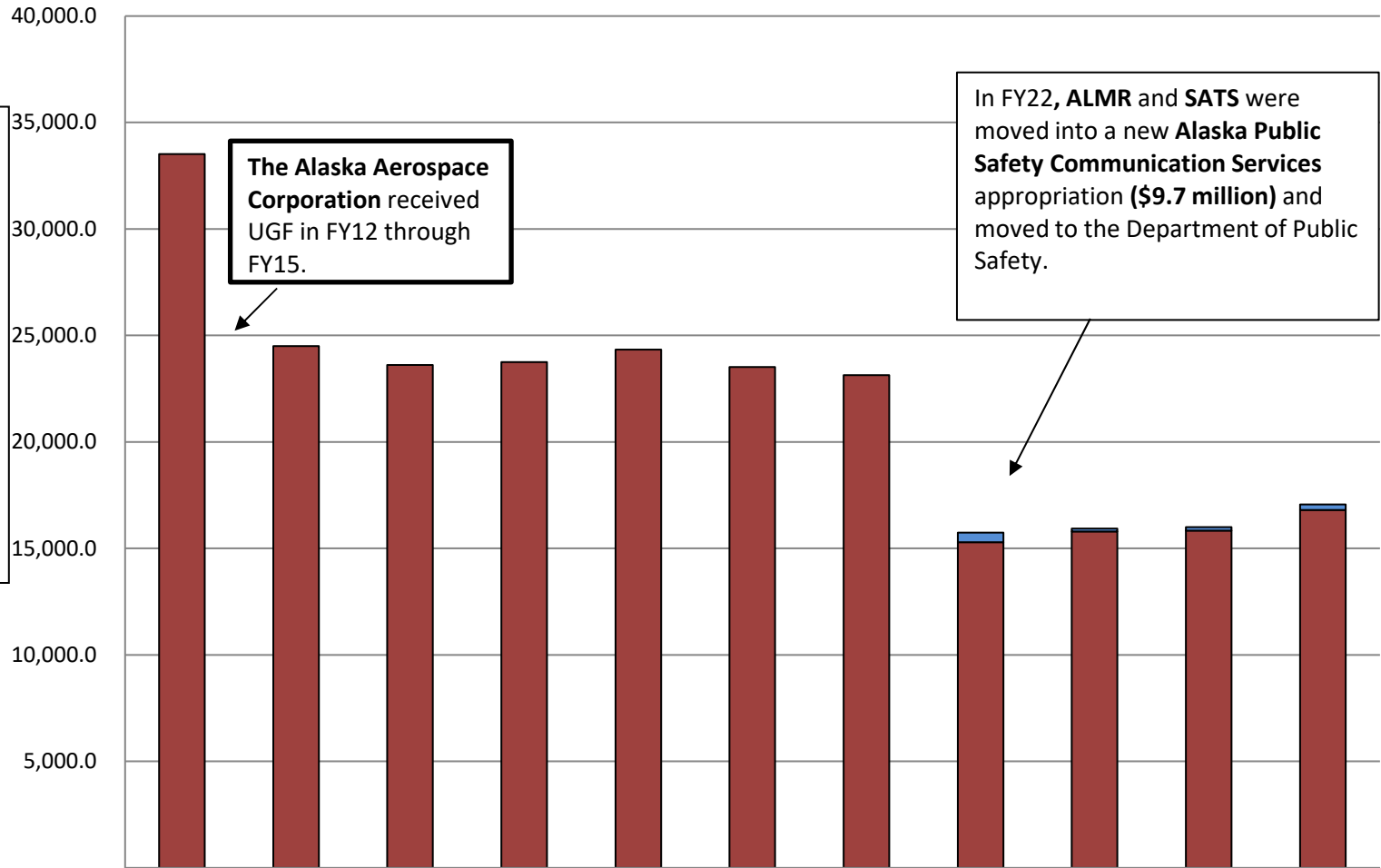


Department of Military & Veterans Affairs Total General Fund Budget (\$ Thousands)



DMVA's GF budget decreased by **\$16.4 million** between FY15 MgtPln and FY25 Governor - an average annual rate of decrease of 7%.

The **FY25** GF budget equates to **\$23 per Alaskan**, based on **736,812** Alaskans.

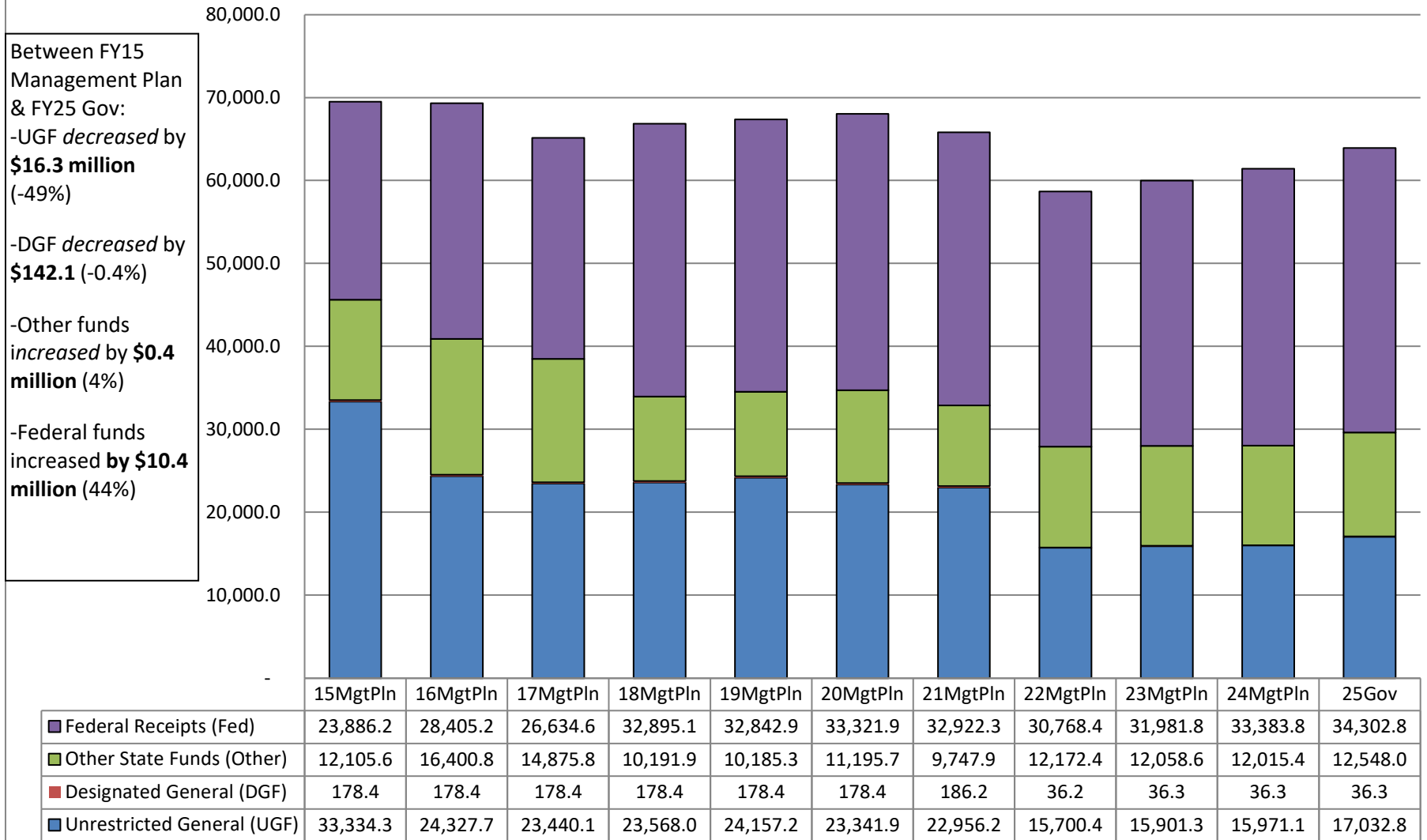
The Alaska Aerospace Corporation received UGF in FY12 through FY15.

In FY22, **ALMR** and **SATS** were moved into a new **Alaska Public Safety Communication Services** appropriation (**\$9.7 million**) and moved to the Department of Public Safety.

	15MgtPln	16MgtPln	17MgtPln	18MgtPln	19MgtPln	20MgtPln	21MgtPln	22MgtPln	23MgtPln	24MgtPln	25Gov
% of All Agencies' Budgets	0.6%	0.5%	0.5%	0.5%	0.5%	0.5%	0.5%	0.3%	0.3%	0.3%	0.3%
■ Average of SB55	-	-	-	-	-	-	-	440.2	146.0	163.5	257.1
■ Total Agency Budget (GF Only)	33,512.7	24,506.1	23,618.5	23,746.4	24,335.6	23,520.3	23,142.4	15,296.4	15,791.6	15,843.9	16,812.0

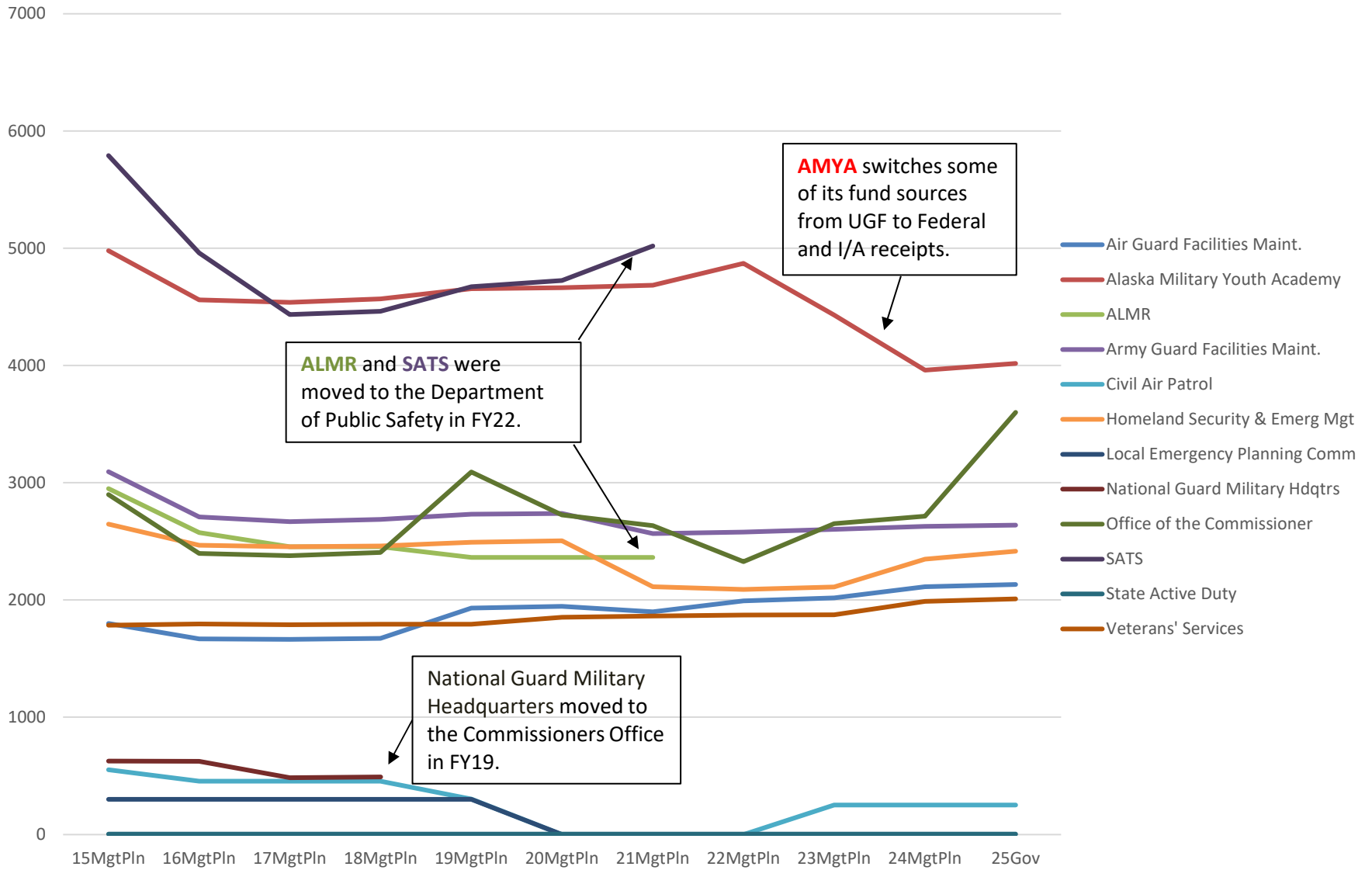
Department of Military & Veterans Affairs Total Funding Comparison by Fund Group

(All Funds)
(\$ Thousands)



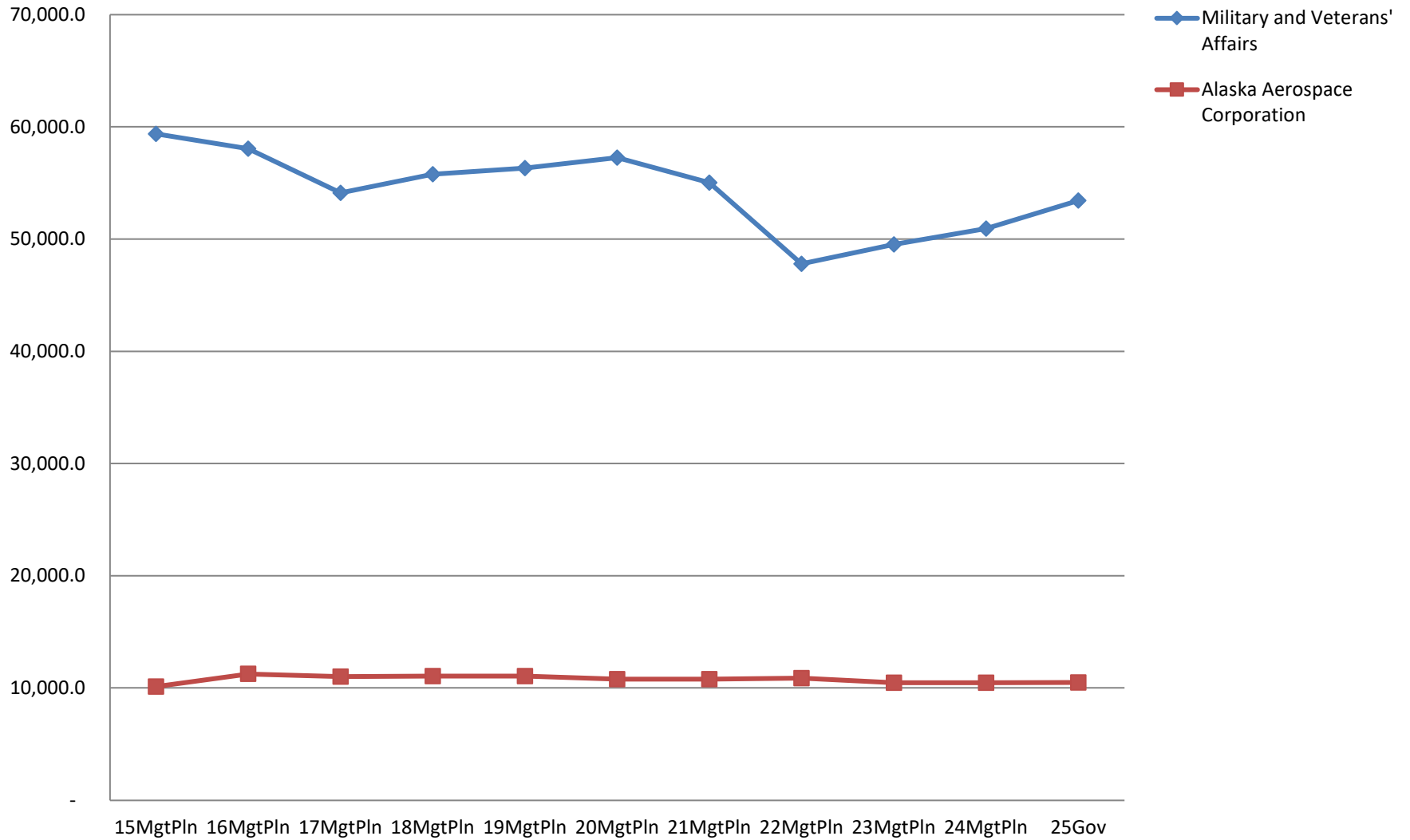
Allocations within Military and Veterans' Affairs

(GF Only)
(\$ Thousands)

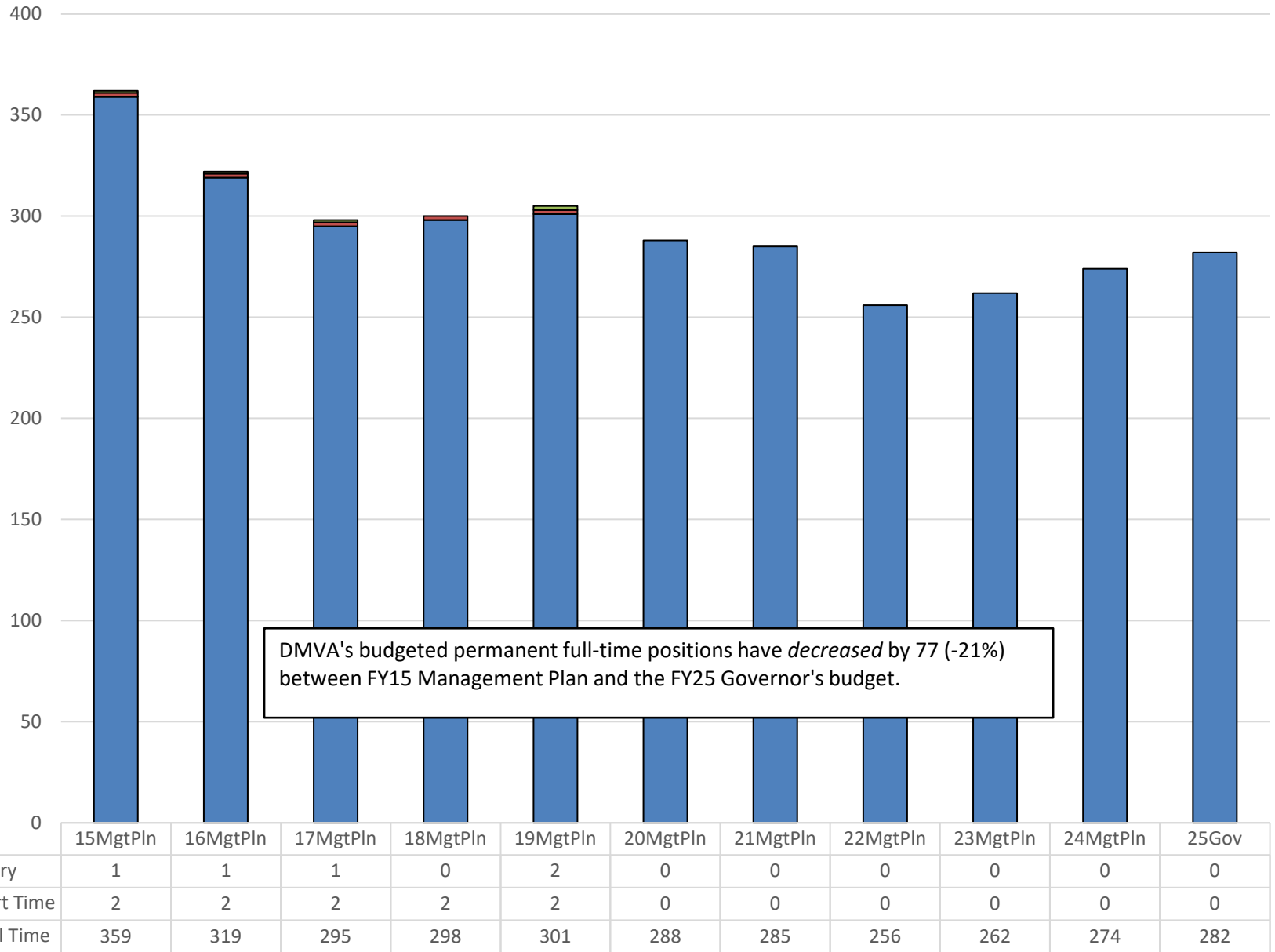


Appropriations within Department of Military & Veterans Affairs

(All Funds)
(\$ Thousands)

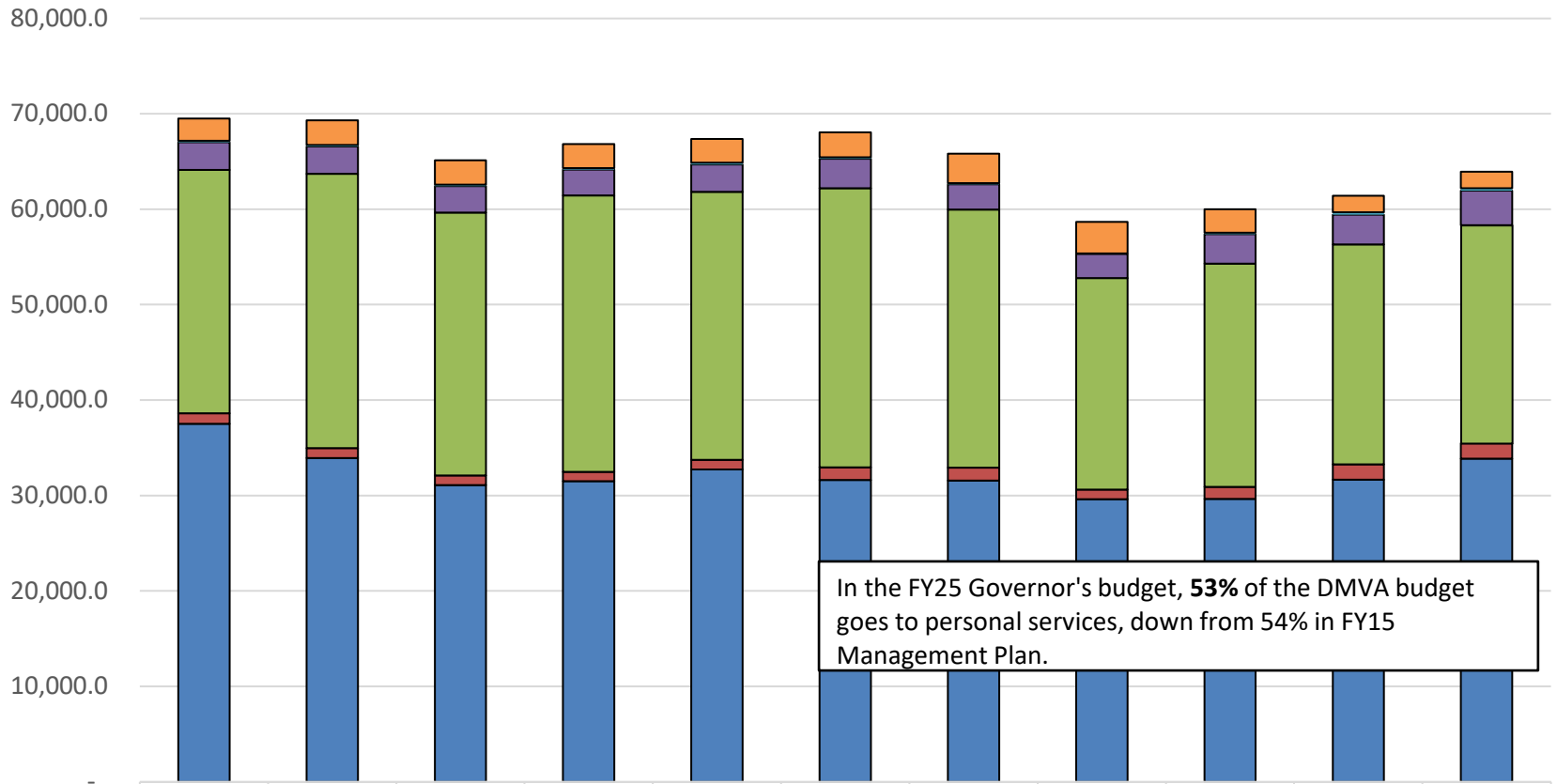


Budgeted Positions in Department of Military & Veterans Affairs



Department of Military & Veterans Affairs Budget by Line Item

(All Funds)
(\$ Thousands)



In the FY25 Governor's budget, **53%** of the DMVA budget goes to personal services, down from 54% in FY15 Management Plan.

	15MgtPln	16MgtPln	17MgtPln	18MgtPln	19MgtPln	20MgtPln	21MgtPln	22MgtPln	23MgtPln	24MgtPln	25Gov
7 Grants, Benefits	2,329.2	2,578.6	2,545.8	2,512.5	2,502.4	2,609.9	3,087.4	3,315.8	2,445.1	1,730.4	1,730.4
5 Capital Outlay	168.8	168.8	168.8	168.8	168.8	144.1	124.6	74.6	152.4	245.4	243.9
4 Commodities	2,882.1	2,857.1	2,754.9	2,704.9	2,879.4	3,078.9	2,630.5	2,502.1	3,093.9	3,107.5	3,625.5
3 Services	25,505.1	28,739.4	27,557.0	28,974.3	28,071.1	29,248.4	27,033.6	22,165.0	23,382.6	23,070.4	22,864.0
2 Travel	1,110.1	1,032.7	1,014.0	980.6	1,023.9	1,324.7	1,381.2	1,015.3	1,269.1	1,609.4	1,609.4
1 Personal Services	37,509.2	33,935.5	31,088.4	31,492.3	32,718.2	31,631.9	31,547.5	29,604.6	29,634.9	31,643.5	33,846.7