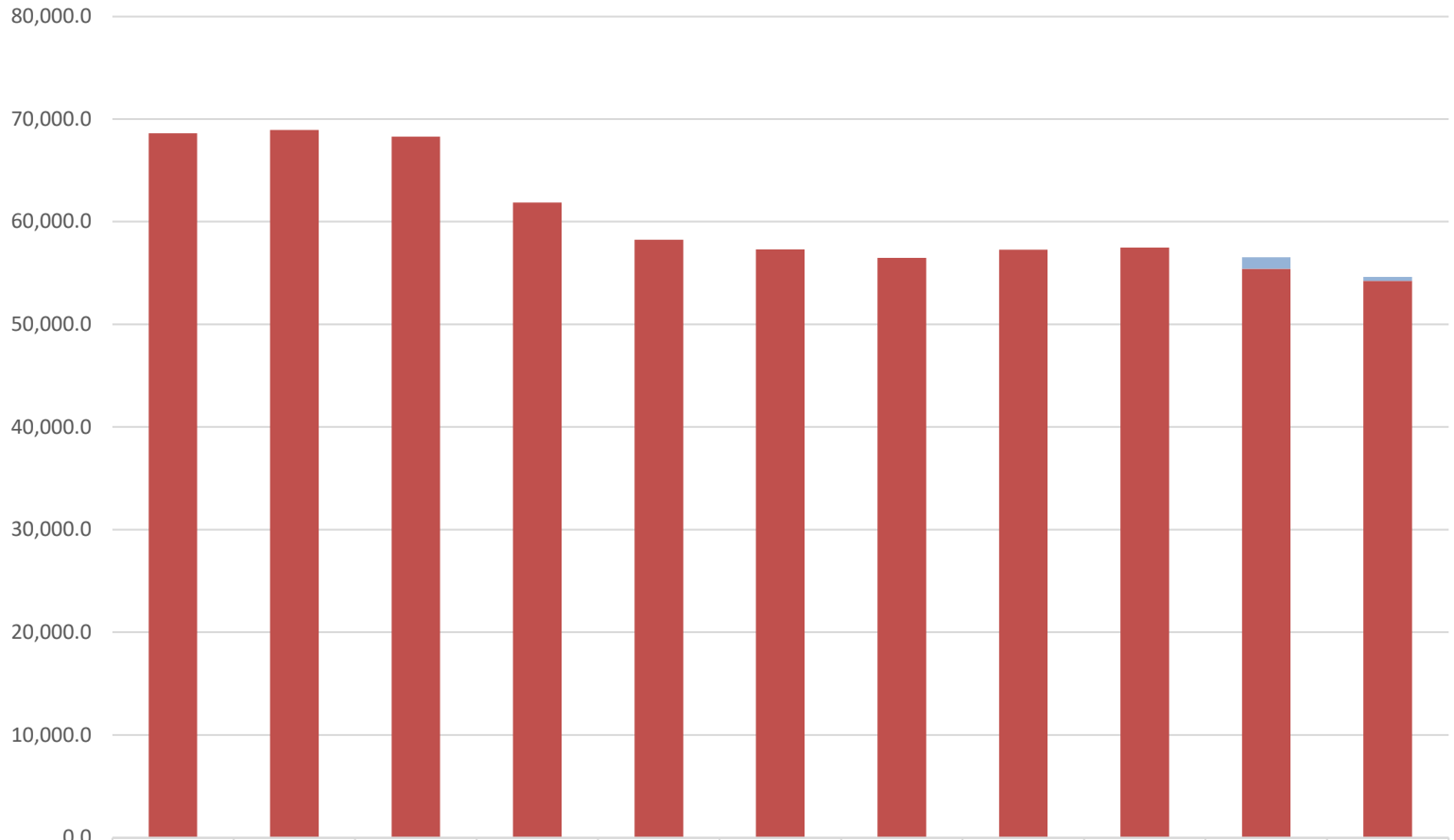


Department of Labor & Workforce Development Share of Total Agency Operations (GF Only) (\$ Thousands)

The department's GF budget *decreased* by about \$14 million (-20%) between FY13 and FY23.

The department's total FY23 GF budget equals \$169 per resident worker, based on 323,711 resident workers.

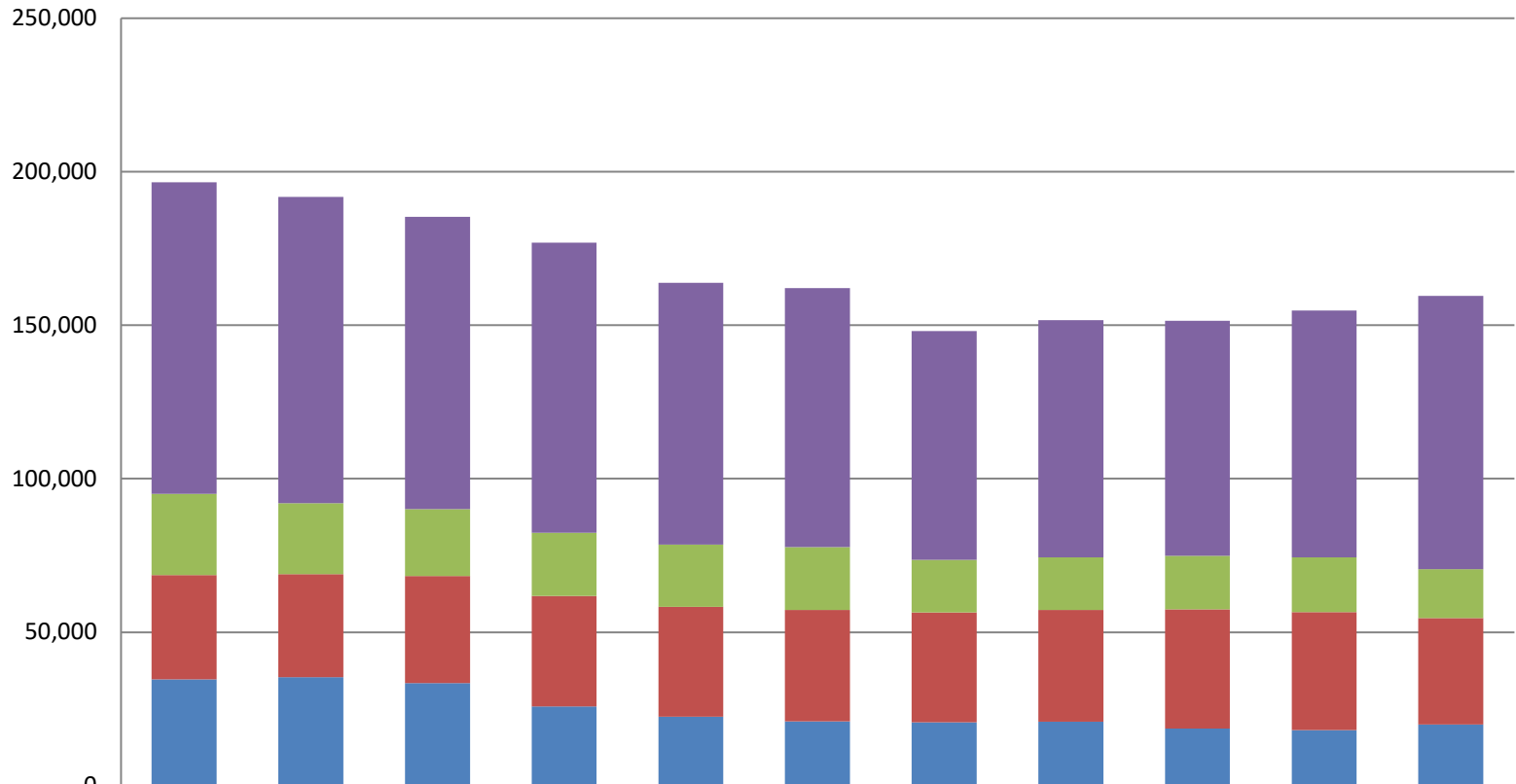


	13MgtPln	14MgtPln	15MgtPln	16MgtPln	17MgtPln	18MgtPln	19MgtPln	20MgtPln	21MgtPln	22MgtPln	23Gov
SB55 Impact	-	-	-	-	-	-	-	-	-	1,129	379
Total Agency Budget (GF Only)	68,619	68,941	68,296	61,847	58,237	57,284	56,464	57,260	57,483	55,402	54,229
% of All Agencies' Budgets	0.9%	0.8%	0.8%	0.8%	1.0%	1.0%	0.9%	1.0%	0.9%	1.1%	0.8%

Department of Labor & Workforce Development Total Funding Comparison by Fund Group

(All Funds)
(\$ Thousands)

Between FY13 MgmtPln and 23Gov:
 --UGF decreased by \$14.7 million (-42%)
 --DGF increased by \$0.7 million (2%)
 --Other Funds decreased by \$23.8 million (-40%)
 --Federal Receipts decreased by \$12.4 million (-12%)



	13MgtPln	14MgtPln	15MgtPln	16MgtPln	17MgtPln	18MgtPln	19MgtPln	20MgtPln	21MgtPln	22MgtPln	23Gov
■ Federal Receipts (Fed)	101,468	99,692	95,238	94,387	85,300	84,338	74,507	77,197	76,550	80,454	89,027
■ Other State Funds (Other)	26,483	23,073	21,774	20,593	20,266	20,410	17,104	17,132	17,379	17,807	15,913
■ Designated General (DGF)	33,929	33,537	34,848	36,015	35,739	36,292	35,767	36,413	38,833	38,407	34,621
■ Unrestricted General (UGF)	34,690	35,404	33,448	25,832	22,497	20,992	20,697	20,847	18,651	18,124	19,988

Appropriations within Department of Labor & Workforce Development (GF Only) (\$ Thousands)

