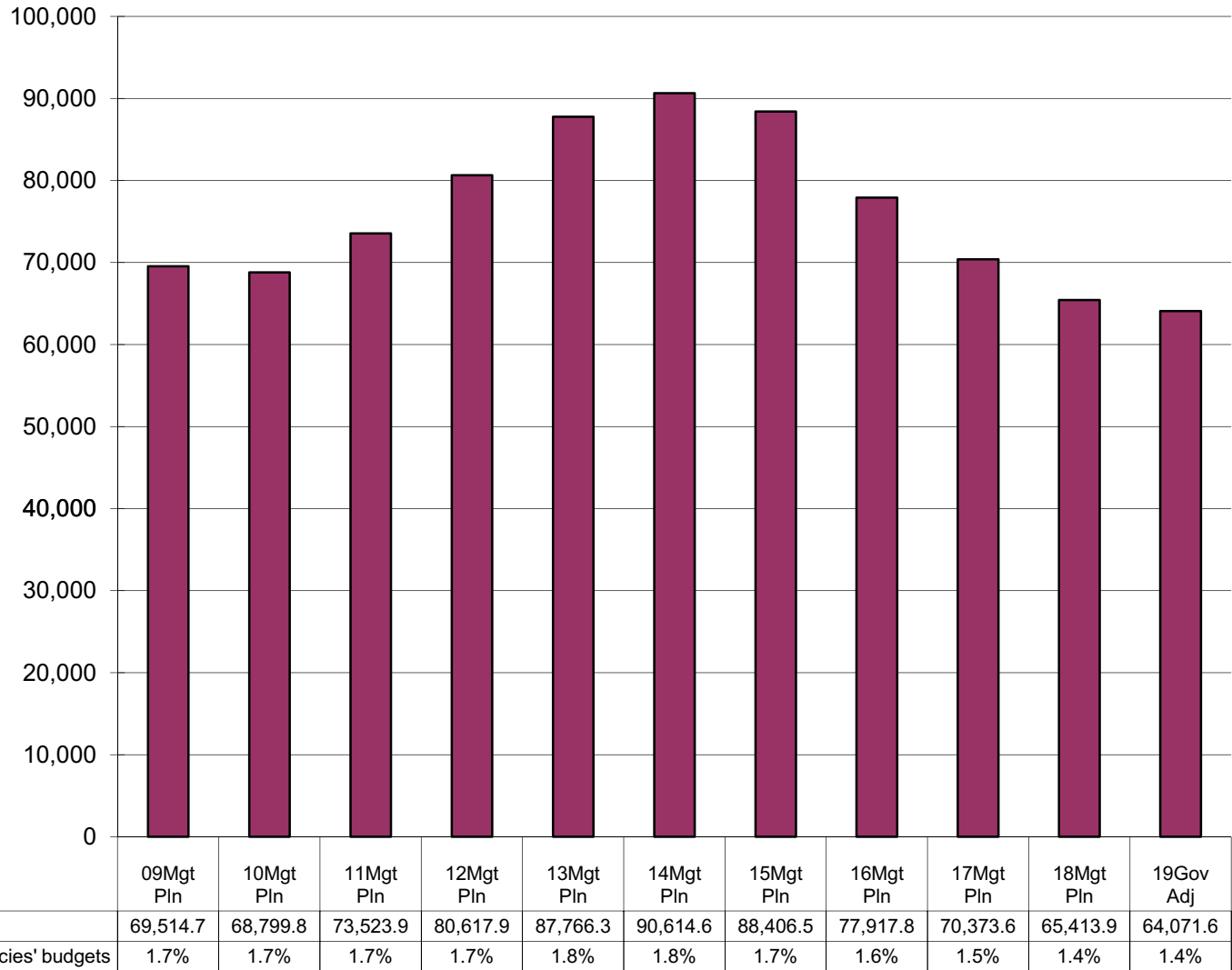


Department of Fish and Game Share of Total Agency Operations (GF Only) (\$ Thousands)

The Department's GF budget decreased by \$5.4 million (7.8%) between FY09 and the FY19 Governor's Request -- an average annual growth rate of -0.8%.

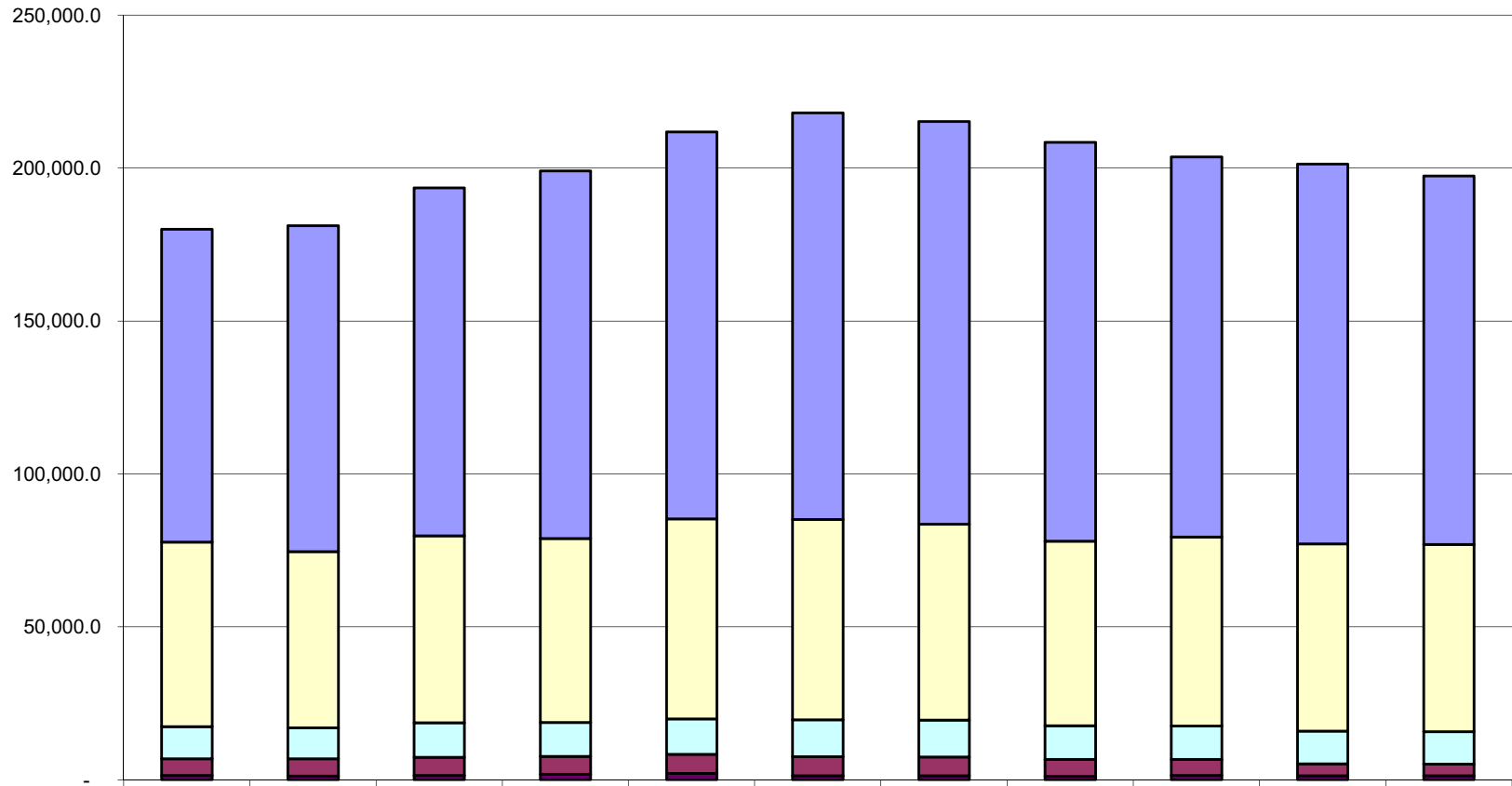
The Department's total FY19 GF Request equals \$193 per resident worker.*



* According to the Department of Labor and Workforce Development, there were 332,583 resident workers in Alaska in 2015.

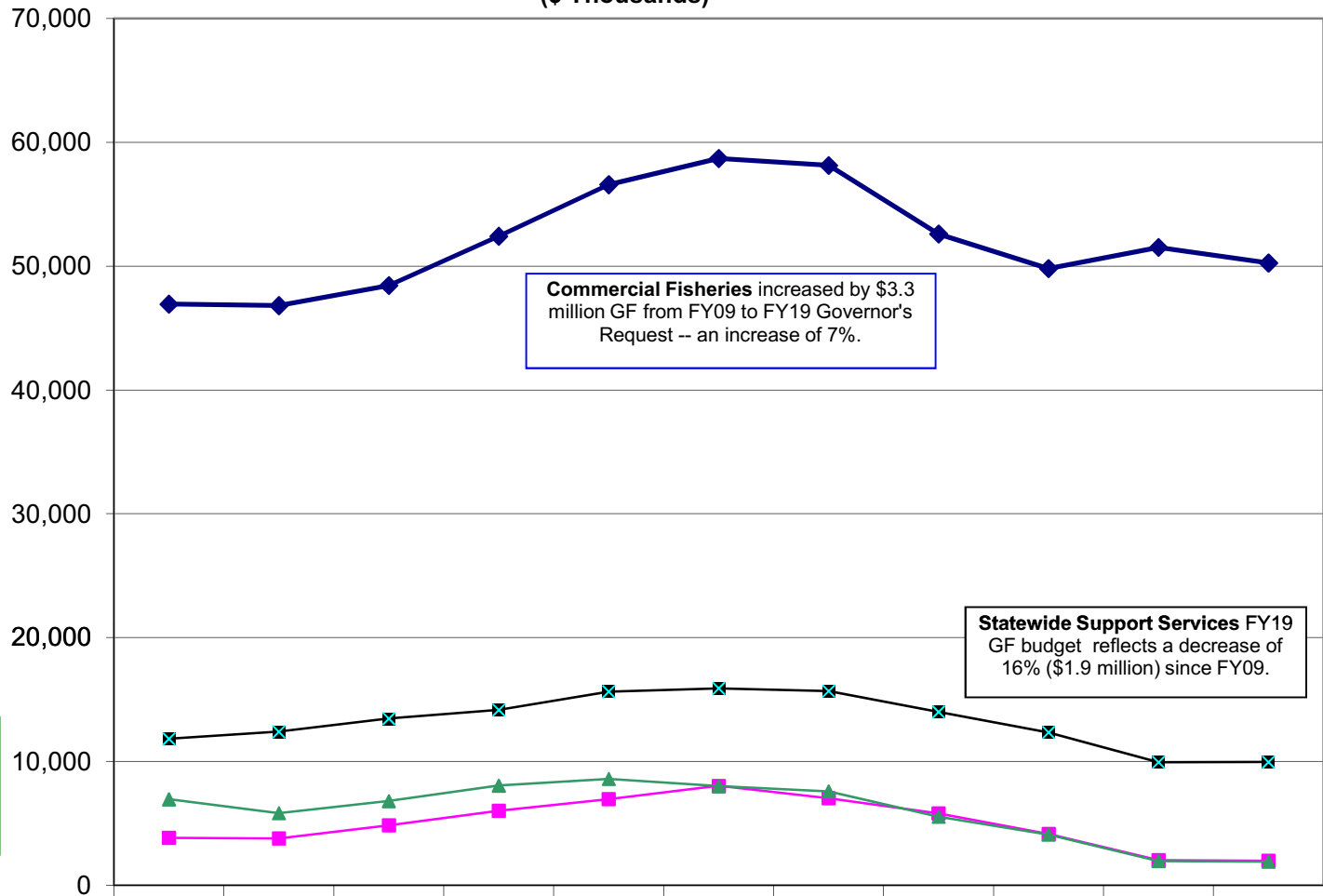
The majority of the FY19 funding is in the following line items:
Personal Services--61%
Services--31%

Department of Fish and Game Line Items (All Funds) (\$ Thousands)



	09MgtPln	10MgtPln	11MgtPln	12MgtPln	13MgtPln	14MgtPln	15MgtPln	16MgtPln	17MgtPln	18MgtPln	19GovAdj
Personal Services	102,317.5	106,537.3	113,729.6	120,222.6	126,479.2	132,952.6	131,708.0	130,455.0	124,303.4	124,157.9	120,433.6
Services	60,345.6	57,654.7	61,182.7	60,127.3	65,397.6	65,499.3	64,031.5	60,331.4	61,812.2	61,199.5	61,232.6
Commodities	10,449.7	10,129.9	11,295.1	11,145.0	11,561.4	12,077.3	12,042.9	10,934.3	10,879.9	10,743.6	10,582.5
Travel	5,475.2	5,596.3	5,928.9	5,807.7	6,272.9	6,222.5	6,160.5	5,573.4	5,272.7	3,868.5	3,797.2
Capital Outlay	1,456.5	1,273.5	1,410.4	1,832.2	2,102.2	1,329.7	1,329.7	1,160.9	1,452.0	1,367.0	1,367.0
Grants, Benefits	-	-	-	-	-	-	-	-	-	-	-
Miscellaneous	-	-	-	-	-	-	-	-	-	-	-

Appropriations within the Department of Fish and Game (GF Only) (\$ Thousands)



Sport Fisheries decreased by \$1.8 million from FY09 to FY19 Governor's Request-- 48% of this appropriation's GF funding.

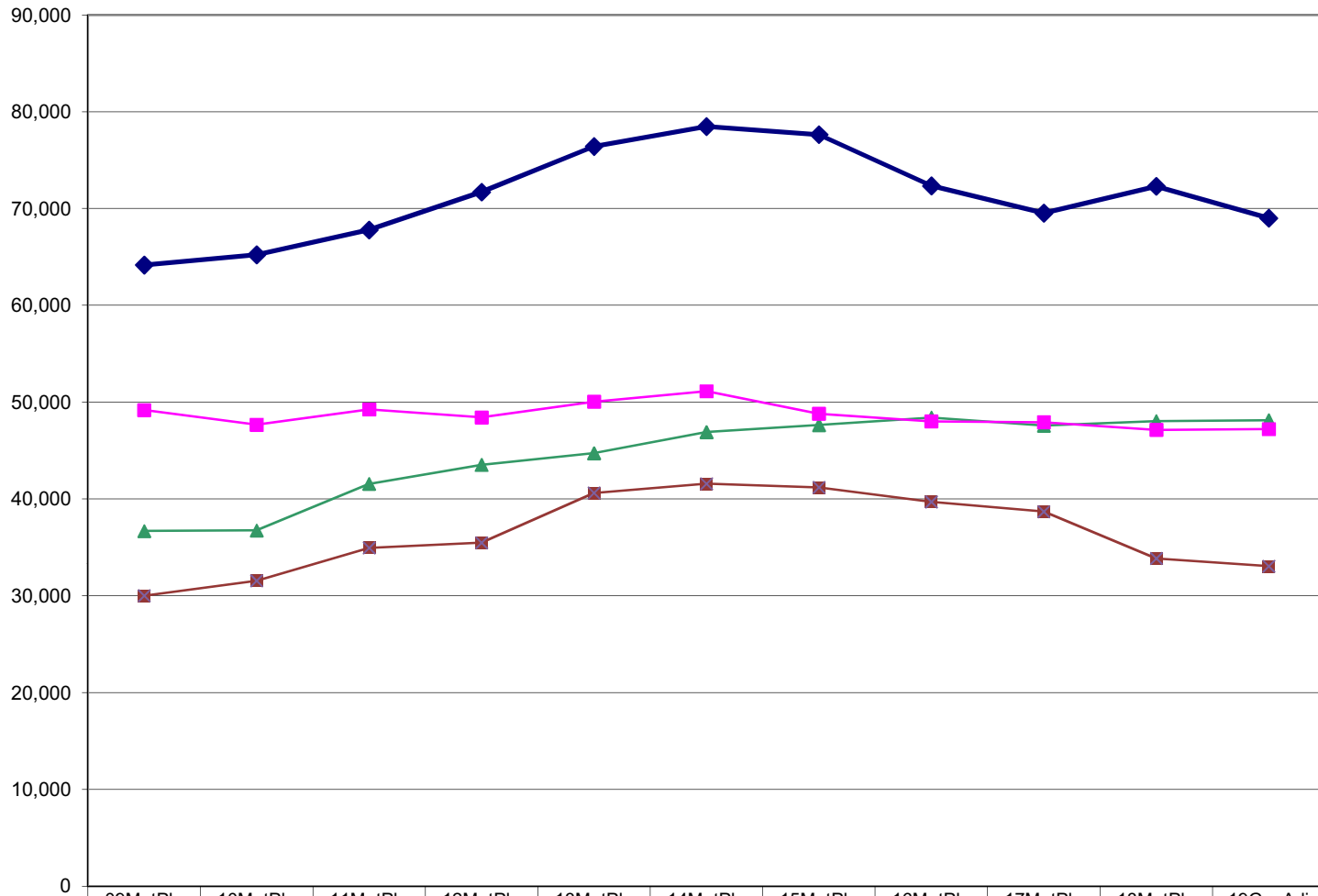
Wildlife Conservation decreased by \$5 million from FY09 to FY19 Governor's Request -- a loss of almost 73% GF.

Commercial Fisheries increased by \$3.3 million GF from FY09 to FY19 Governor's Request -- an increase of 7%.

Statewide Support Services FY19 GF budget reflects a decrease of 16% (\$1.9 million) since FY09.

	09MgtPln	10MgtPln	11MgtPln	12MgtPln	13MgtPln	14MgtPln	15MgtPln	16MgtPln	17MgtPln	18MgtPln	19GovAdj
Commercial Fisheries	46,934.1	46,812.5	48,442.4	52,418.0	56,592.6	58,706.7	58,138.7	52,603.2	49,812.5	51,521.1	50,255.8
Statewide Support Services	11,821.2	12,392.4	13,452.6	14,155.1	15,633.7	15,901.4	15,673.7	13,993.8	12,342.1	9,930.5	9,947.2
Sport Fisheries	3,819.8	3,775.0	4,837.3	6,006.2	6,952.4	8,016.0	7,018.4	5,792.5	4,133.3	2,017.4	1,970.1
Wildlife Conservation	6,939.6	5,819.9	6,791.6	8,038.6	8,587.6	7,990.5	7,575.7	5,528.3	4,085.7	1,944.9	1,898.5

Appropriations within the Department of Fish and Game (All Funds) (\$ Thousands)



Commercial Fisheries increased by \$4.8 million from FY09 to FY19 Governor's Request -- an increase of 8%.

Sport Fisheries decreased by about \$2 million (a 4% drop) from FY09 to FY19 Governor's Request.

Wildlife Conservation increased by \$11.5 million from FY09 to FY19 Governor's Request -- an increase of 31% when all funds are taken into consideration.

Statewide Support Services increased by \$3 million from FY09 to FY19 Governor's Request -- an increase of 10%.

	09MgtPln	10MgtPln	11MgtPln	12MgtPln	13MgtPln	14MgtPln	15MgtPln	16MgtPln	17MgtPln	18MgtPln	19GovAdj
Commercial Fisheries	64,172.5	65,225.9	67,787.0	71,700.3	76,421.0	78,473.5	77,636.0	72,339.3	69,529.8	72,301.2	69,004.9
Wildlife Conservation	36,685.7	36,746.8	41,562.8	43,527.8	44,728.3	46,907.3	47,638.6	48,412.0	47,574.5	48,049.0	48,140.3
Sport Fisheries	49,184.0	47,669.7	49,248.0	48,426.6	50,043.7	51,126.9	48,802.0	48,007.0	47,923.2	47,132.3	47,216.1
Statewide Support Services	30,002.3	31,549.3	34,948.9	35,480.1	40,620.3	41,573.7	41,196.0	39,696.7	38,692.7	33,854.0	33,051.6